

## Recombinant Human RRBP1 protein, His & T7-tagged

Cat. No. RRBP1-1667H Lot. No. (See product label)

### SPECIFICATION

**Product Overview** Recombinant Human RRBP1 aa. (Arg822~Val977 (Accession # Q9P2E9)) fused with N-terminal His & T7 tag was produced in E. coli cells.

**Species** Human

**Source** E.coli

**ProteinLength** Arg822~Val977

**Description** This gene encodes a ribosome-binding protein of the endoplasmic reticulum (ER) membrane. Studies suggest that this gene plays a role in ER proliferation, secretory pathways and secretory cell differentiation, and mediation of ER-microtubule interactions. Alternative splicing has been observed and protein isoforms are characterized by regions of N-terminal decapeptide and C-terminal heptad repeats. Splicing of the tandem repeats results in variations in ribosome-binding affinity and secretory function. The full-length nature of variants which differ in repeat length has not been determined. Pseudogenes of this gene have been identified on chromosomes 3 and 7, and RRBP1 has been excluded as a candidate gene in the cause of Alagille syndrome, the result of a mutation in a nearby gene on chromosome 20p12.

**Form** Freeze-dried powder

**Molecular Mass** 30kDa as determined by SDS-PAGE reducing conditions.

 Tel: 1-631-559-9269 1-516-512-3133

 Email: [info@creative-biomart.com](mailto:info@creative-biomart.com)  Fax: 1-631-938-8127

 45-1 Ramsey Road, Shirley, NY 11967, USA

<b>Endotoxin</b>	<1.0EU per 1ug (determined by the LAL method)
<b>Purity</b>	>95%
<b>Applications</b>	SDS-PAGE; WB; ELISA; IP.
<b>Stability</b>	The thermal stability is described by the loss rate. The loss rate was determined by accelerated thermal degradation test, that is, incubate the protein at 37°C for 48h, and no obvious degradation and precipitation were observed. The loss rate is less than 5% within the expiration date under appropriate storage condition.
<b>Storage</b>	Avoid repeated freeze/thaw cycles. Store at 2-8°C for one month. Aliquot and store at -80°C for 12 months.
<b>Storage buffer</b>	Supplied as lyophilized form in 20mM Tris, 150mM NaCl, pH8.0, containing 1mM EDTA, 1mM DTT, 0.01% sarcosyl, 5% trehalose, and preservative.
<b>Reconstitution</b>	Reconstitute in sterile ddH <sub>2</sub> O.
<b>Isoelectric Point</b>	4.7

## GENE INFORMATION

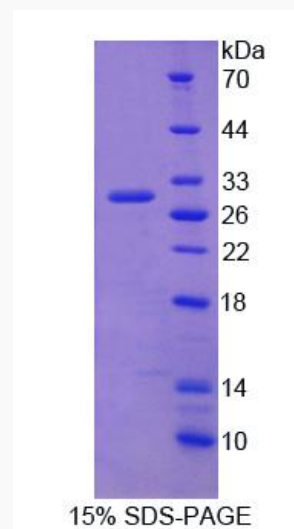
<b>Gene Name</b>	RRBP1 ribosome binding protein 1 [ Homo sapiens (human) ]
<b>Official Symbol</b>	RRBP1
<b>Synonyms</b>	RRBP1; ribosome binding protein 1; RRp; hES; ES130; ES/130; ribosome-binding protein 1; 180 kDa ribosome receptor homolog; ES/130-related protein; ribosome binding protein 1 homolog 180kDa (dog); ribosome receptor protein

 Tel: 1-631-559-9269 1-516-512-3133

 Email: [info@creative-biomart.com](mailto:info@creative-biomart.com)  Fax: 1-631-938-8127

 45-1 Ramsey Road, Shirley, NY 11967, USA

<b>Gene ID</b>	6238
<b>mRNA Refseq</b>	NM_001042576.1
<b>Protein Refseq</b>	NP_001036041.1
<b>UniProt ID</b>	Q9P2E9

**SDS-PAGE**

 Tel: 1-631-559-9269 1-516-512-3133

 Email: [info@creative-biomart.com](mailto:info@creative-biomart.com)  Fax: 1-631-938-8127

 45-1 Ramsey Road, Shirley, NY 11967, USA