

Recombinant Human RRM1 Protein, His-tagged

Cat. No. RRM1-374H Lot. No. (See product label)

SPECIFICATION

| | |
|-------------------------|--|
| Product Overview | Recombinant Human RRM1(Met1~Pro213) fused with His tag at N-terminal was expressed in E. coli. |
| Species | Human |
| Source | E.coli |
| ProteinLength | Met1~Pro213 |
| Description | This gene encodes the large and catalytic subunit of ribonucleotide reductase, an enzyme essential for the conversion of ribonucleotides into deoxyribonucleotides. A pool of available deoxyribonucleotides is important for DNA replication during S phase of the cell cycle as well as multiple DNA repair processes. Alternative splicing results in multiple transcript variants. |
| Form | PBS, pH7.4, containing 0.01% SKL, 1mM DTT, 5% Trehalose and Proclin300. |
| Molecular Mass | 28kDa |
| Endotoxin | <1.0EU per 1g (determined by the LAL method) |
| Purity | > 98% |
| Applications | Positive Control; Immunogen; SDS-PAGE; WB. If bio-activity of the protein is needed, please check active protein. |

 Tel: 1-631-559-9269 1-516-512-3133

 Email: info@creative-biomart.com  Fax: 1-631-938-8127

 45-1 Ramsey Road, Shirley, NY 11967, USA

Stability The thermal stability is described by the loss rate. The loss rate was determined by accelerated thermal degradation test, that is, incubate the protein at 37 centigrade for 48h, and no obvious degradation and precipitation were observed. The loss rate is less than 5% within the expiration date under appropriate storage condition.

Storage Avoid repeated freeze/thaw cycles. Store at 2-8 centigrade for one month. Aliquot and store at -80 centigrade for 12 months.

Reconstitution Reconstitute in PBS or others.

GENE INFORMATION

Gene Name [RRM1 ribonucleotide reductase M1 \[Homo sapiens \]](#)

Official Symbol [RRM1](#)

Synonyms RRM1; ribonucleotide reductase M1; ribonucleotide reductase M1 polypeptide; ribonucleoside-diphosphate reductase large subunit; ribonucleotide reductase, R1 subunit; ribonucleotide reductase, large subunit; ribonucleoside-diphosphate reductase subunit M1; R1; RR1; RIR1;

Gene ID [6240](#)

mRNA Refseq [NM_001033](#)

Protein Refseq [NP_001024](#)

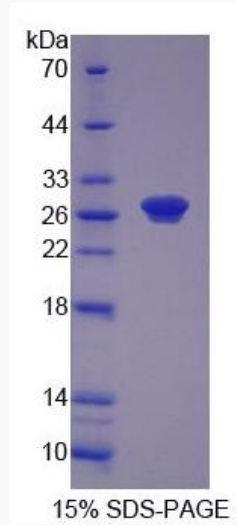
MIM [180410](#)

UniProt ID [P23921](#)

 Tel: 1-631-559-9269 1-516-512-3133

 Email: info@creative-biomart.com  Fax: 1-631-938-8127

 45-1 Ramsey Road, Shirley, NY 11967, USA



Tel: 1-631-559-9269 1-516-512-3133

Email: info@creative-biomart.com Fax: 1-631-938-8127

45-1 Ramsey Road, Shirley, NY 11967, USA