

Active Recombinant Full Length Human RRM2 Protein, C-Flag-tagged

Cat. No. RRM2-137HFL **Lot. No.** (See product label)

SPECIFICATION

Product Overview	Recombinant Full Length Human RRM2 Protein, fused to Flag-tag at C-terminus, was expressed in Mammalian cells.
Species	Human
Source	Mammalian Cells
Description	This gene encodes one of two non-identical subunits for ribonucleotide reductase. This reductase catalyzes the formation of deoxyribonucleotides from ribonucleotides. Synthesis of the encoded protein (M2) is regulated in a cell-cycle dependent fashion. Transcription from this gene can initiate from alternative promoters, which results in two isoforms that differ in the lengths of their N-termini. Related pseudogenes have been identified on chromosomes 1 and X.
Form	25 mM Tris HCl, pH 7.3, 100 mM glycine, 10% glycerol.
Bio-activity	Binding assay
Molecular Mass	44.7 kDa
AA Sequence	<p>MLSLRVPLAPITDPQQLQLSPLKGLSLVDKENTPPALSGTRVLASKTARRIFQEPTPEP KTKAAAPGVEDE PLLRENPRRFVIFPIEYHDIWQMYKKAESFWTAAEEVDLSKDIQH WESLKPEERYFISHVLAFFAASDGI VNELVERFSQEVQITEARCFYGFQIAMENIHS EMYSLIDITYIKDPKEREFLFNAIETMPCVKKKADWA LRWIGDKEATYGERVVAFAA</p>

 Tel: 1-631-559-9269 1-516-512-3133

 Email: info@creative-biomart.com  Fax: 1-631-938-8127

 45-1 Ramsey Road, Shirley, NY 11967, USA



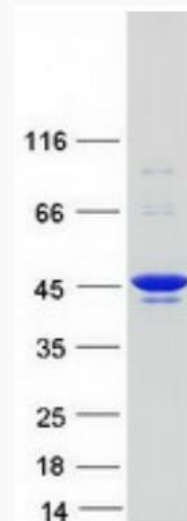
VEGIFFSGSFASIFWLKKRGLMPGLTFSNELISRDEGLHCDFACLMPFKHL VHKPSEE
 RVREIIINAVRIEQEFLTEALPVKLIGMNCTLMKQYIEFVADRLMLELGFASKVFRVENPF
 DFM
 ENISLEGKTNFFEKRVGEYQRMGMSSPTENSFTLDADFTRTRPLEQKLISEEDLAA
 NDILDYKDDDDKV

Purity	> 80% as determined by SDS-PAGE and Coomassie blue staining.
Stability	Stable for 12 months from the date of receipt of the product under proper storage and handling conditions. Avoid repeated freeze-thaw cycles.
Storage	Store at -80 centigrade.
Concentration	>50 ug/mL as determined by microplate BCA method.
Preparation	Recombinant protein was captured through anti-DDK affinity column followed by conventional chromatography steps.
Protein Families	Druggable Genome
Protein Pathways	Glutathione metabolism, Metabolic pathways, p53 signaling pathway, Purine metabolism, Pyrimidine metabolism
Full Length	Full L.

GENE INFORMATION

Gene Name	RRM2 ribonucleotide reductase regulatory subunit M2 [Homo sapiens (human)]
Official Symbol	RRM2

Synonyms	R2; RR2; RR2M; C2orf48
Gene ID	6241
mRNA Refseq	NM_001034.4
Protein Refseq	NP_001025.1
MIM	180390
UniProt ID	P31350



Coomassie blue staining of purified RRM2 protein.

 Tel: 1-631-559-9269 1-516-512-3133

 Email: info@creative-biomart.com  Fax: 1-631-938-8127

 45-1 Ramsey Road, Shirley, NY 11967, USA