

Recombinant Full Length Human RRM2 Protein (Met1-Phe389), C-His tagged

Cat. No. RRM2-6206H Lot. No. (See product label)

SPECIFICATION

Product Overview	Recombinant human RRM2 (Met1-Phe389) fused with the C-terminal His tag was expressed in mammalian cells.
Species	Human
Source	Mammalian Cells
ProteinLength	Met1-Phe389
Form	Lyophilized powder/frozen liquid
Molecular Mass	42.79 kDa
Purity	> 90 % as determined by SDS-PAGE
Notes	For research use only.
Storage	Use a manual defrost freezer and avoid repeated freeze thaw cycles. Store at 2 to 8 centigrade for one week. Store at -20 to -80 centigrade for twelve months from the date of receipt.
Storage Buffer	Supplied as solution form in PBS or lyophilized from PBS.
Reconstitution	Reconstitute in sterile water for a stock solution.

 Tel: 1-631-559-9269 1-516-512-3133

 Email: info@creative-biomart.com  Fax: 1-631-938-8127

 45-1 Ramsey Road, Shirley, NY 11967, USA

Shipping They are shipped out with dry ice/blue ice unless customers require otherwise.

GENE INFORMATION

Gene Name RRM2 ribonucleotide reductase M2 [Homo sapiens (human)]

Official Symbol RRM2

Synonyms RRM2; ribonucleotide reductase M2; ribonucleotide reductase M2 polypeptide; ribonucleoside-diphosphate reductase subunit M2; ribonucleotide reductase small chain; ribonucleotide reductase small subunit; R2; RR2; RR2M;

Gene ID 6241

mRNA Refseq NM_001034

Protein Refseq NP_001025

MIM 180390

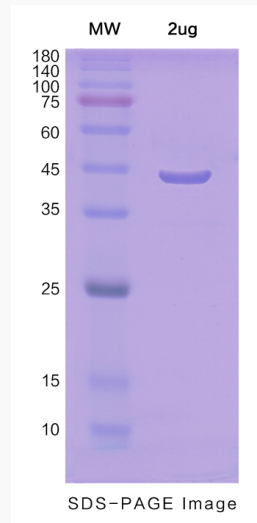
UniProt ID P31350

 Tel: 1-631-559-9269 1-516-512-3133

 Email: info@creative-biomart.com  Fax: 1-631-938-8127

 45-1 Ramsey Road, Shirley, NY 11967, USA

SDS-PAGE



 Tel: 1-631-559-9269 1-516-512-3133

 Email: info@creative-biomart.com  Fax: 1-631-938-8127

 45-1 Ramsey Road, Shirley, NY 11967, USA