

## Recombinant Human RRM2 Protein

Cat. No. RRM2-69H Lot. No. (See product label)

### SPECIFICATION

**Product Overview** Recombinant Human RRM2 Protein was expressed in E. coli.

**Species** Human

**Source** E.coli

**Description** This gene encodes one of two non-identical subunits for ribonucleotide reductase. This reductase catalyzes the formation of deoxyribonucleotides from ribonucleotides. Synthesis of the encoded protein (M2) is regulated in a cell-cycle dependent fashion. Transcription from this gene can initiate from alternative promoters, which results in two isoforms that differ in the lengths of their N-termini. Related pseudogenes have been identified on chromosomes 1 and X.

**Form** Liquid. In 20 mM Tris-HCl, 100 mM NaCl, pH 8.0, containing 10% glycerol.

**Molecular Mass** ~47.0 kDa

**AA Sequence**

```

MGSSHHHHHHSSGLVPRGSHMLSLRVPLAPITDPQQLQLSPLKGLSLVDKENTPPA
LSGTRVLASKTARRIFQEPTKPKAAAPGVEDEPLLRENPRRFVIFPIEYHDIWQMY
QKAEASFWTAAEEVDLSKDIQHWESLKPEERYFISHVLAFFAASDGIVNENLVERFSQ
EVQITEARCFYGFQIAMENIHSEMYSLIDITYIKDPKEREFLFNAIETMPCVKKKADWA
LRWIGDKEATYGERVVAFAAVEGIFFSGSFASIFWLKKRGLMPGLTFSNELISRDEGL
HCDFACLMFKHLVHKPSEERVREIIINAVRIEQEFLTEALPVKLIGMNCTLMKQYIEFV
ADRLMLELGFVFRVENPFDPMENISLEGKTNFFEKRVGEYQRMGMVSSPTENSF
TLDADF
    
```

 Tel: 1-631-559-9269 1-516-512-3133

 Email: [info@creative-biomart.com](mailto:info@creative-biomart.com)  Fax: 1-631-938-8127

 45-1 Ramsey Road, Shirley, NY 11967, USA

<b>Purity</b>	>90%
<b>Storage</b>	Short Term Storage at 4 centigrade, Long Term, please prepare aliquots with 20% glycerol and store at -20 to -80 centigrade. Avoid freeze/thaw cycles.
<b>Concentration</b>	0.1 mg/ml
<b>Official Full Name</b>	Ribonucleotide reductase regulatory subunit M2

## GENE INFORMATION

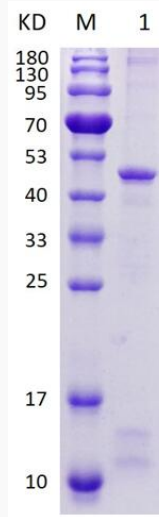
<b>Gene Name</b>	RRM2 ribonucleotide reductase regulatory subunit M2 [ Homo sapiens (human) ]
<b>Official Symbol</b>	RRM2
<b>Synonyms</b>	R2; RR2; RR2M; C2orf48
<b>Gene ID</b>	6241
<b>mRNA Refseq</b>	NM_001034
<b>Protein Refseq</b>	NP_001025
<b>MIM</b>	180390
<b>UniProt ID</b>	P31350

 Tel: 1-631-559-9269 1-516-512-3133

 Email: [info@creative-biomart.com](mailto:info@creative-biomart.com)  Fax: 1-631-938-8127

 45-1 Ramsey Road, Shirley, NY 11967, USA

**SDS-PAGE**



15% SDS-PAGE analysis profiles of purified RRM2 (CBB stained).

 Tel: 1-631-559-9269 1-516-512-3133

 Email: [info@creative-biomart.com](mailto:info@creative-biomart.com)  Fax: 1-631-938-8127

 45-1 Ramsey Road, Shirley, NY 11967, USA