

Recombinant Human RSPH9 Protein, GST-Tagged

Cat. No. RSPH9-0117H Lot. No. (See product label)

SPECIFICATION

Product Overview	Human C6orf206 full-length ORF (NP_689945.2, 1 a.a. - 276 a.a.) recombinant protein with GST-tag at N-terminal.
Species	Human
Source	Wheat Germ
Description	This gene encodes a protein thought to be a component of the radial spoke head in motile cilia and flagella. Mutations in this gene are associated with primary ciliary dyskinesia 12. Alternative splicing results in multiple transcript variants.[provided by RefSeq, Jul 2010]
Molecular Mass	57.7 kDa
AA Sequence	MDADSLLLSLELASGSGQGLSPDRRASLLTSLMLVKRDYRYDRVLFWGRILGLVADY YIAQGLSEDQLAPRKTLTSLNCTEWSLLPPATEEMVAQSSVVKGRFMGDPSYEYEH TELQKVNEGEKVFEEEEIVVQIKEETRLVSVIDQIDKAVAIIPRGALFKTPFGPTHVNRTF EGLSLSEAKKLSSYFHFREPVELKNKTLLEKADLDPSLDFMDSLEHDIPKGSWSIQM ERGNALVVLRLLWPGLTFYHAPRTKNYGYVYVGTGEKNMDLPFML
Applications	Enzyme-linked Immunoabsorbent Assay Western Blot (Recombinant protein) Antibody Production Protein Array

 Tel: 1-631-559-9269 1-516-512-3133

 Email: info@creative-biomart.com  Fax: 1-631-938-8127

 45-1 Ramsey Road, Shirley, NY 11967, USA

Storage Store at -80 centigrade. Aliquot to avoid repeated freezing and thawing.

Storage Buffer 50 mM Tris-HCl, 10 mM reduced Glutathione, pH=8.0 in the elution buffer.

GENE INFORMATION

Gene Name [RSPH9 radial spoke head 9 homolog \(Chlamydomonas\) \[Homo sapiens \]](#)

Official Symbol [RSPH9](#)

Synonyms RSPH9; radial spoke head 9 homolog (Chlamydomonas); C6orf206, chromosome 6 open reading frame 206, mitochondrial ribosomal protein S18A like 1, MRPS18AL1; radial spoke head protein 9 homolog; CILD12; FLJ30845; C6orf206; MRPS18AL1;

Gene ID [221421](#)

mRNA Refseq [NM_001193341](#)

Protein Refseq [NP_001180270](#)

MIM [612648](#)

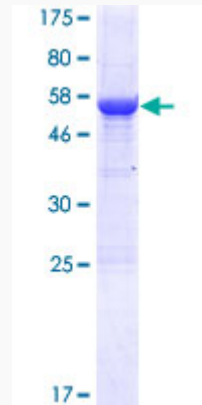
UniProt ID [Q9H1X1](#)

 Tel: 1-631-559-9269 1-516-512-3133

 Email: info@creative-biomart.com  Fax: 1-631-938-8127

 45-1 Ramsey Road, Shirley, NY 11967, USA

**Quality Control
Testing**



12.5% SDS-PAGE Stained with Coomassie Blue.

 Tel: 1-631-559-9269 1-516-512-3133

 Email: info@creative-biomart.com  Fax: 1-631-938-8127

 45-1 Ramsey Road, Shirley, NY 11967, USA