

## Active Recombinant Human RSPO1 Protein, His-tagged

Cat. No. RSPO1-2612H Lot. No. (See product label)

### SPECIFICATION

<b>Product Overview</b>	Active Recombinant Human RSPO1 Protein(NP_001033722.1) (Met 1-Ala 263) was expressed in HEK293, fused with a polyhistidine tag at the C-terminus.
<b>Species</b>	Human
<b>Source</b>	HEK293
<b>ProteinLength</b>	1-263 aa
<b>Form</b>	Lyophilized from sterile PBS, pH 7.4.
<b>Bio-activity</b>	<p>1. Measured by its binding ability in a functional ELISA. Immobilized human RSPO1 at 20 µg/ml (100 µl/well) can bind human LIMPII with a linear ranger of 32-800 ng/ml.</p> <p>2. Measured by its binding ability in a functional ELISA. Immobilized human RSPO1 at 20 µg/ml (100 µl/well) can bind mouse CD36 with a linear ranger of 6.4-800 ng/ml.</p> <p>3. Measured by its ability to induce activation of response in a Topflash Luciferase assay using HEK293T human embryonic kidney cells. The ED50 for this effect is typically 0.05-0.5 µg/mL in the presence of 5 ng/mL recombinant mouse Wnt3a.</p>
<b>Molecular Mass</b>	The secreted recombinant human RSPO1 comprises 254 amino acids with a predicted molecular mass of 28.2 kDa. As a result of glycosylation, rhRSPO1 migrates as an approximately 42 kDa band in SDS-PAGE under reducing conditions.
<b>Endotoxin</b>	< 1.0 EU per

 Tel: 1-631-559-9269 1-516-512-3133

 Email: [info@creative-biomart.com](mailto:info@creative-biomart.com)  Fax: 1-631-938-8127

 45-1 Ramsey Road, Shirley, NY 11967, USA

	µg of the protein as determined by the LAL method.
<b>Purity</b>	> 98 % as determined by SDS-PAGE
<b>Storage</b>	Store it under sterile conditions at -20°C to -80°C upon receiving. Recommend to aliquot the protein into smaller quantities for optimal storage. Avoid repeated freeze-thaw cycles.
<b>Reconstitution</b>	It is recommended that sterile water be added to the vial to prepare a stock solution of 0.2 ug/ul. Centrifuge the vial at 4°C before opening to recover the entire contents.
<b>protein Refseq-Weblink</b>	<a href="http://www.ncbi.nlm.nih.gov/protein/NP_001033722.1">http://www.ncbi.nlm.nih.gov/protein/NP_001033722.1</a>
<b>Unit ID</b>	Q2MKA7
<b>Unit ID-Weblink</b>	<a href="https://www.uniprot.org/uniprotkb/Q2MKA7">https://www.uniprot.org/uniprotkb/Q2MKA7</a>

## GENE INFORMATION

<b>Gene Name</b>	<a href="#">RSPO1 R-spondin 1 [ Homo sapiens ]</a>
<b>Official Symbol</b>	<a href="#">RSPO1</a>
<b>Synonyms</b>	RSPO1; R-spondin 1; R spondin homolog (Xenopus laevis); R-spondin-1; FLJ40906; RSPONDIN; R-spondin homolog; roof plate-specific spondin-1; RSPO; CRISTIN3; RP11-566C13.1;
<b>Gene ID</b>	<a href="#">284654</a>
<b>mRNA Refseq</b>	<a href="#">NM_001038633</a>

 Tel: 1-631-559-9269 1-516-512-3133

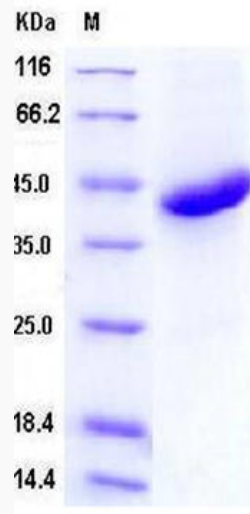
 Email: [info@creative-biomart.com](mailto:info@creative-biomart.com)  Fax: 1-631-938-8127

 45-1 Ramsey Road, Shirley, NY 11967, USA

protein Refseq NP\_001033722

MIM 609595

SDS-PAGE



 Tel: 1-631-559-9269 1-516-512-3133

 Email: [info@creative-biomart.com](mailto:info@creative-biomart.com)  Fax: 1-631-938-8127

 45-1 Ramsey Road, Shirley, NY 11967, USA