

## Recombinant Active Human RSPO1 Protein, His-tagged(C-ter)

Cat. No. RSPO1-278H Lot. No. (See product label)

### SPECIFICATION

<b>Product Overview</b>	Recombinant Active Human RSPO1 Protein with His tag (C-ter) was expressed in HEK293.
<b>Species</b>	Human
<b>Source</b>	HEK293
<b>ProteinLength</b>	Arg31-Ala263
<b>Description</b>	This gene encodes a secreted activator protein with two cysteine-rich, furin-like domains and one thrombospondin type 1 domain. The encoded protein is a ligand for leucine-rich repeat-containing G-protein coupled receptors (LGR proteins) and positively regulates the Wnt signaling pathway. In mice, the protein induces the rapid onset of crypt cell proliferation and increases intestinal epithelial healing, providing a protective effect against chemotherapy-induced adverse effects. Alternative splicing results in multiple transcript variants. [provided by RefSeq, Apr 2014]
<b>Form</b>	Powder
<b>Bio-activity</b>	Measured by its ability to enhance Cyclin D1 expression in HCT116 human colon adenocarcinoma cells. 0.1-10 ng/mL of Recombinant Human RSPO1 can effectively enhance Cyclin D1 expression.
<b>Endotoxin</b>	Endotoxin level is less than 0.1 EU/μg of the protein, as determined by the LAL test.

 Tel: 1-631-559-9269 1-516-512-3133

 Email: [info@creative-biomart.com](mailto:info@creative-biomart.com)  Fax: 1-631-938-8127

 45-1 Ramsey Road, Shirley, NY 11967, USA

<b>Purity</b>	> 92% (by SDS-PAGE)
<b>Applications</b>	FuncSt, SDS-PAGE
<b>Notes</b>	For laboratory research only, not for drug, diagnostic or other use.
<b>Storage</b>	Lyophilized protein should be stored at -20°C or -80°C. After reconstitution, aliquot and store at -20°C for up to one month, at 2-8°C for up to one week. Storage in frost free freezers is not recommended. Avoid repeated freeze/thaw cycles. Suggest spin the vial prior to opening.
<b>Storage Buffer</b>	PBS (pH 7.4)
<b>Reconstitution</b>	Reconstitute to a concentration of 0.1-0.5 mg/ml in sterile distilled water.

## GENE INFORMATION

<b>Gene Name</b>	RSPO1 R-spondin 1 [ Homo sapiens ]
<b>Official Symbol</b>	RSPO1
<b>Synonyms</b>	RSPO1; R-spondin 1; R spondin homolog (Xenopus laevis); R-spondin-1; FLJ40906; RSPONDIN; R-spondin homolog; roof plate-specific spondin-1; RSPO; CRISTIN3; RP11-566C13.1;
<b>Gene ID</b>	284654
<b>mRNA Refseq</b>	NM_001038633
<b>Protein Refseq</b>	NP_001033722

 Tel: 1-631-559-9269 1-516-512-3133

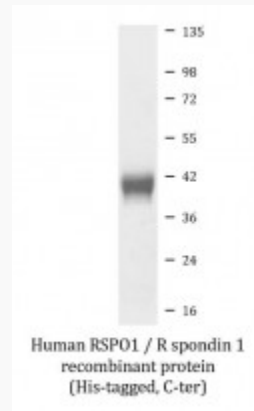
 Email: [info@creative-biomart.com](mailto:info@creative-biomart.com)  Fax: 1-631-938-8127

 45-1 Ramsey Road, Shirley, NY 11967, USA

**MIM** 609595

**UniProt ID** Q2MKA7

**SDS-PAGE**



 Tel: 1-631-559-9269 1-516-512-3133

 Email: [info@creative-biomart.com](mailto:info@creative-biomart.com)  Fax: 1-631-938-8127

 45-1 Ramsey Road, Shirley, NY 11967, USA