

Active Recombinant Human RSPO1 Protein, Pre-aliquoted

Cat. No. RSPO1-28H **Lot. No.** (See product label)

SPECIFICATION

Product Overview	Recombinant Human RSPO1 Protein, Arg31 - Ala263, was expressed in CHO.
Species	Human
Source	CHO
ProteinLength	Arg31-Ala263
Description	This gene encodes a secreted activator protein with two cysteine-rich, furin-like domains and one thrombospondin type 1 domain. The encoded protein is a ligand for leucine-rich repeat-containing G-protein coupled receptors (LGR proteins) and positively regulates the Wnt signaling pathway. In mice, the protein induces the rapid onset of crypt cell proliferation and increases intestinal epithelial healing, providing a protective effect against chemotherapy-induced adverse effects. Alternative splicing results in multiple transcript variants.
Bio-activity	Measured by its ability to induce Topflash reporter activity in HEK293T human embryonic kidney cells. The ED50 for this effect is 1.0-4.0 ng/mL in the presence of 5 ng/mL Recombinant Mouse Wnt-3a.
Molecular Mass	Predicted Molecular Mass:25.6 kDa SDS-PAGE: 39 kDa, reducing conditions
N-terminal Sequence Analysis	Ser21 & Arg31

 Tel: 1-631-559-9269 1-516-512-3133

 Email: info@creative-biomart.com  Fax: 1-631-938-8127

 45-1 Ramsey Road, Shirley, NY 11967, USA

Endotoxin	< 0.10 EU/μg of the protein by the LAL method.
Purity	> 90% by SDS-PAGE under reducing conditions and visualized by silver stain.
Stability	<p>Use a manual defrost freezer and avoid repeated freeze-thaw cycles.</p> <ul style="list-style-type: none"> • 6 months from date of receipt at room temperature as supplied. • 12 months from date of receipt at 2-8 centigrade as supplied. • 1 month at 2-8 centigrade under sterile conditions after reconstitution. • 3 months at -20 to -80 centigrade under sterile conditions after reconstitution.
Reconstitution	For a stock solution, reconstitute at 100 μg/mL in sterile PBS. For immediate use, simply roll Pre-aliquoted directly into cell culture medium.
Shipping	The product is shipped at ambient temperature.

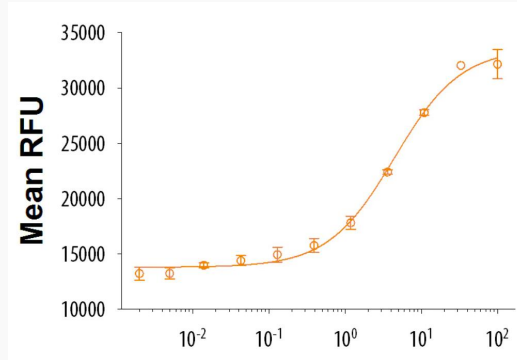
GENE INFORMATION

Gene Name	RSPO1 R-spondin 1 [Homo sapiens (human)]
Official Symbol	RSPO1
Synonyms	RSPO1; R-spondin 1; RSPO; CRISTIN3; R-spondin-1; R-spondin homolog; roof plate-specific spondin-1
Gene ID	284654
mRNA Refseq	NM_001038633
Protein Refseq	NP_001033722
MIM	609595

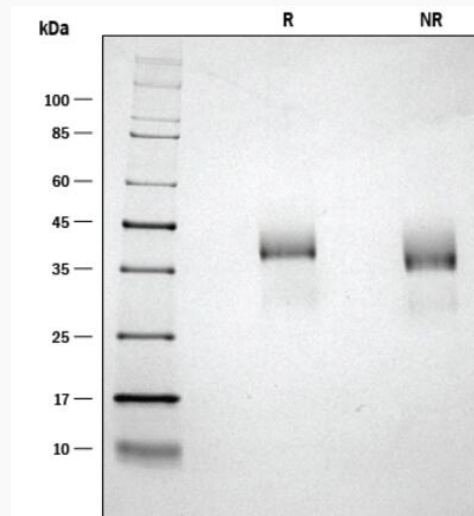
 Tel: 1-631-559-9269 1-516-512-3133

 Email: info@creative-biomart.com  Fax: 1-631-938-8127

 45-1 Ramsey Road, Shirley, NY 11967, USA

UniProt ID
Q2MKA7
Bio-activity


Recombinant Human R-Spondin 1, in the presence of Recombinant Mouse Wnt-3a (5 ng/mL), induces activation of beta-catenin in HEK293T cells measured using the Topflash assay.

SDS-PAGE


1 µg/lane of Recombinant Human R-Spondin 1 was resolved with SDS-PAGE under reducing (R) and non-reducing (NR) conditions and visualized with silver staining,

 Tel: 1-631-559-9269 1-516-512-3133

 Email: info@creative-biomart.com  Fax: 1-631-938-8127

 45-1 Ramsey Road, Shirley, NY 11967, USA



showing a single band at 39 kDa.

 Tel: 1-631-559-9269 1-516-512-3133

 Email: info@creative-biomart.com  Fax: 1-631-938-8127

 45-1 Ramsey Road, Shirley, NY 11967, USA