

Recombinant Human RSP01 protein, For Organoid Culture

Cat. No. RSPO1-2943H **Lot. No.** (See product label)

SPECIFICATION

Product Overview	Recombinant Human RSP01 protein(Q2MKA7)(Ser21-Ala263) was expressed in HEK293.
Species	Human
Source	HEK293
ProteinLength	Ser21-Ala263
Tag	Non
Form	Lyophilized from sterile PBS, pH 7.4, 3% trehalose.
Bio-activity	Measured by its ability to induce Topflash reporter activity in HEK293 reporter cells. The ED50 for this effect is 0.5-5.0ng/mL in the presence of 20 ng/mL Recombinant Wnt Surrogate Fc Chimera Protein.
Molecular Mass	25.6 kDa (monomer)
Endotoxin	<0.10 EU/μg of the protein by the LAL method.
Purity	>90%, by SDS-PAGE under reducing conditions.
Storage	The product is shipped at ambient temperature. Upon receipt, store it immediately at the temperature recommended below: To the date of expiration, -20°C to -80°C as

 Tel: 1-631-559-9269 1-516-512-3133

 Email: info@creative-biomart.com  Fax: 1-631-938-8127

 45-1 Ramsey Road, Shirley, NY 11967, USA

supplied. 3 months, -20°C to -80°C under sterile conditions after reconstitution. 1 month, 2 to 8 °C under sterile conditions after reconstitution. Avoid repeated freeze-thaw cycles.

Reconstitution

It is recommended that sterile water be added to the vial to prepare a stock solution of 0.2 ug/ul. Centrifuge the vial at 4°C before opening to recover the entire contents.

GENE INFORMATION

Gene Name [RSPO1 R-spondin 1 \[Homo sapiens \]](#)

Official Symbol [RSPO1](#)

Synonyms [RSPO1](#); [R-spondin 1](#); [R spondin homolog \(Xenopus laevis\)](#); [R-spondin-1](#); [FLJ40906](#); [RSPONDIN](#); [R-spondin homolog](#); [roof plate-specific spondin-1](#); [RSPO](#); [CRISTIN3](#); [RP11-566C13.1](#);

Gene ID [284654](#)

mRNA Refseq [NM_001038633](#)

Protein Refseq [NP_001033722](#)

MIM [609595](#)

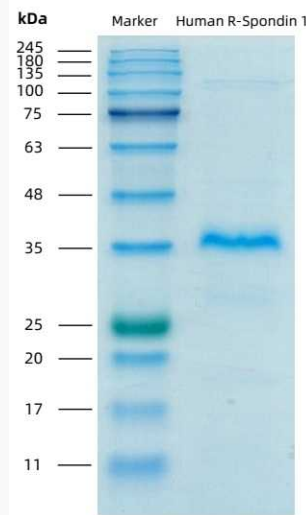
UniProt ID [Q2MKA7](#)

 Tel: 1-631-559-9269 1-516-512-3133

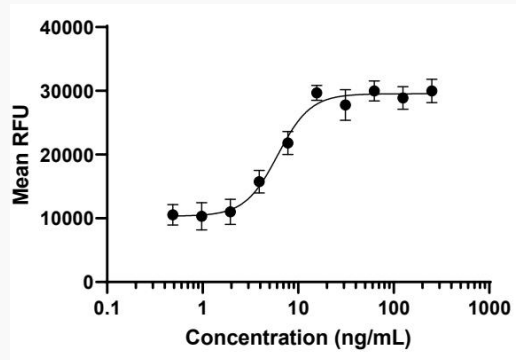
 Email: info@creative-biomart.com  Fax: 1-631-938-8127

 45-1 Ramsey Road, Shirley, NY 11967, USA

SDS-PAGE



Activity



 Tel: 1-631-559-9269 1-516-512-3133

 Email: info@creative-biomart.com  Fax: 1-631-938-8127

 45-1 Ramsey Road, Shirley, NY 11967, USA