

Active Recombinant Human RSPO1 Protein

Cat. No. RSPO1-351H Lot. No. (See product label)

SPECIFICATION

Product Overview	Active Recombinant Human RSPO1 Protein(NP_001033722.1) (Met 1-Ala 263)was expressed and purified in CHO.
Species	Human
Source	CHO
ProteinLength	1-263 aa
Form	Lyophilized from sterile PBS, PH 7.4.
Bio-activity	Measured by its ability to induce activation of β catenin response in a Topflash Luciferase assay using HEK293T human embryonic kidney cells. The ED50 for this effect is typically 40-400 ng/mL in the presence of 5 ng/mL recombinant mouse Wnt3a.
Molecular Mass	The recombinant human RSPO1 consists of 243 amino acids and has a predicted molecular mass of 26.8 kDa. As a result of glycosylation, the apparent molecular mass of it is approximately 40 and 31 kDa in SDS-PAGE under reducing conditions.
Endotoxin	< 1.0 EU per μ g of the protein as determined by the LAL method.
Purity	(53.2+43.4) % as determined by SDS-PAGE
Storage	Store it under sterile conditions at -20°C to -80°C upon receiving. Recommend to

 Tel: 1-631-559-9269 1-516-512-3133

 Email: info@creative-biomart.com  Fax: 1-631-938-8127

 45-1 Ramsey Road, Shirley, NY 11967, USA

aliquot the protein into smaller quantities for optimal storage. Avoid repeated freeze-thaw cycles.

Reconstitution

It is recommended that sterile water be added to the vial to prepare a stock solution of 0.2 ug/ul. Centrifuge the vial at 4°C before opening to recover the entire contents.

protein Refseq-Weblink

http://www.ncbi.nlm.nih.gov/protein/NP_001033722.1

Unit ID

Q2MKA7

Unit ID-Weblink

<https://www.uniprot.org/uniprotkb/Q2MKA7>

GENE INFORMATION

Gene Name

RSPO1 R-spondin 1 [Homo sapiens]

Official Symbol

RSPO1

Synonyms

RSPO1; R-spondin 1; R spondin homolog (Xenopus laevis); R-spondin-1; FLJ40906; RSPONDIN; R-spondin homolog; roof plate-specific spondin-1; RSPO; CRISTIN3; RP11-566C13.1;

Gene ID

284654

mRNA Refseq

NM_001038633

protein Refseq

NP_001033722

MIM

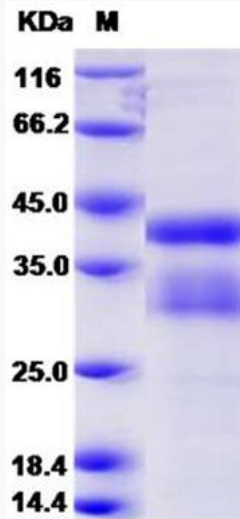
609595

 Tel: 1-631-559-9269 1-516-512-3133

 Email: info@creative-biomart.com  Fax: 1-631-938-8127

 45-1 Ramsey Road, Shirley, NY 11967, USA

SDS-PAGE



 Tel: 1-631-559-9269 1-516-512-3133

 Email: info@creative-biomart.com  Fax: 1-631-938-8127

 45-1 Ramsey Road, Shirley, NY 11967, USA