

Active Recombinant Human RSPO1 Protein, His-tagged

Cat. No. RSPO1-3872H Lot. No. (See product label)

SPECIFICATION

Product Overview	Active Recombinant Human RSPO1 Protein(Met 1-Ala 146)(NP_001033722.1) was expressed in HEK293, fused with a polyhistidine tag at the C-terminus.
Species	Human
Source	HEK293
ProteinLength	1-146 aa
Form	Lyophilized from sterile PBS, pH 7.4.
Bio-activity	Measured by its ability to bind recombinant mouse CD36 in a functional ELISA.
Molecular Mass	The secreted recombinant human RSPO1 (aa 1-146) comprises 137 amino acids and has a predicted molecular mass of 14 kDa. As a result of glycosylation, rhRSPO1 migrates as an approximately 23 kDa band in SDS-PAGE under reducing conditions.
Endotoxin	< 1.0 EU per µg of the protein as determined by the LAL method.
Purity	> 98 % as determined by SDS-PAGE
Storage	Store it under sterile conditions at -20°C to -80°C upon receiving. Recommend to aliquot the protein into smaller quantities for optimal storage. Avoid repeated freeze-thaw cycles.

 Tel: 1-631-559-9269 1-516-512-3133

 Email: info@creative-biomart.com  Fax: 1-631-938-8127

 45-1 Ramsey Road, Shirley, NY 11967, USA

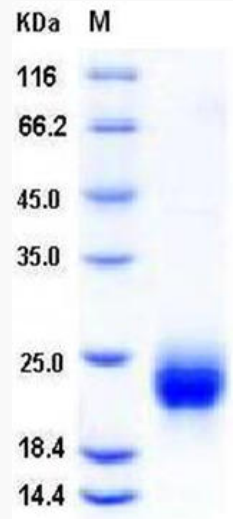
Reconstitution	It is recommended that sterile water be added to the vial to prepare a stock solution of 0.2 ug/ul. Centrifuge the vial at 4°C before opening to recover the entire contents.
protein Refseq-Weblink	http://www.ncbi.nlm.nih.gov/protein/NP_001033722.1
Unit ID	Q2MKA7
Unit ID-Weblink	https://www.uniprot.org/uniprotkb/Q2MKA7
GENE INFORMATION	
Gene Name	RSPO1 R-spondin 1 [Homo sapiens]
Official Symbol	RSPO1
Synonyms	RSPO1; R-spondin 1; R spondin homolog (Xenopus laevis); R-spondin-1; FLJ40906; RSPONDIN; R-spondin homolog; roof plate-specific spondin-1; RSPO; CRISTIN3; RP11-566C13.1;
Gene ID	284654
mRNA Refseq	NM_001038633
protein Refseq	NP_001033722
MIM	609595

 Tel: 1-631-559-9269 1-516-512-3133

 Email: info@creative-biomart.com  Fax: 1-631-938-8127

 45-1 Ramsey Road, Shirley, NY 11967, USA

SDS-PAGE



 Tel: 1-631-559-9269 1-516-512-3133

 Email: info@creative-biomart.com  Fax: 1-631-938-8127

 45-1 Ramsey Road, Shirley, NY 11967, USA