

Recombinant Human RSPO1 Protein (Arg31-Ala263), C-His tagged

Cat. No. RSPO1-5825H Lot. No. (See product label)

SPECIFICATION

Product Overview	Recombinant human RSPO1 (Arg31-Ala263) fused with the C-terminal His tag was expressed in mammalian cells.
Species	Human
Source	Mammalian Cells
ProteinLength	Arg31-Ala263
Form	Lyophilized powder/frozen liquid
Molecular Mass	25.63 kDa
Purity	> 90 % as determined by SDS-PAGE
Notes	For research use only.
Storage	Use a manual defrost freezer and avoid repeated freeze thaw cycles. Store at 2 to 8 centigrade for one week. Store at -20 to -80 centigrade for twelve months from the date of receipt.
Storage Buffer	Supplied as solution form in PBS or lyophilized from PBS.
Reconstitution	Reconstitute in sterile water for a stock solution.

 Tel: 1-631-559-9269 1-516-512-3133

 Email: info@creative-biomart.com  Fax: 1-631-938-8127

 45-1 Ramsey Road, Shirley, NY 11967, USA

Shipping

They are shipped out with dry ice/blue ice unless customers require otherwise.

GENE INFORMATION**Gene Name**

RSPO1 R-spondin 1 [Homo sapiens (human)]

Official Symbol

RSPO1

Synonyms

RSPO1; R-spondin 1; R spondin homolog (Xenopus laevis); R-spondin-1; FLJ40906; RSPONDIN; R-spondin homolog; roof plate-specific spondin-1; RSPO; CRISTIN3; RP11-566C13.1;

Gene ID

284654

mRNA Refseq

NM_001038633

Protein Refseq

NP_001033722

MIM

609595

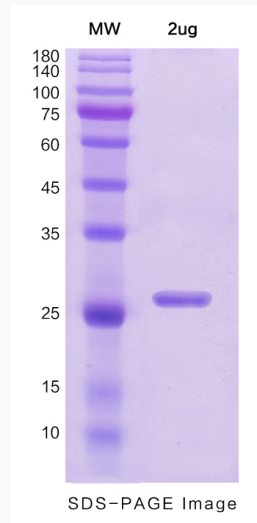
UniProt ID

Q2MKA7

 Tel: 1-631-559-9269 1-516-512-3133 Email: info@creative-biomart.com  Fax: 1-631-938-8127 45-1 Ramsey Road, Shirley, NY 11967, USA



SDS-PAGE



Tel: 1-631-559-9269 1-516-512-3133

Email: info@creative-biomart.com Fax: 1-631-938-8127

45-1 Ramsey Road, Shirley, NY 11967, USA