

Recombinant Human RSPO1 Protein (Ser21-Ala135), N-His tagged

Cat. No. RSPO1-5826H Lot. No. (See product label)

SPECIFICATION

Product Overview	Recombinant human RSPO1 (Ser21-Ala135) fused with the N-His tag was expressed in E. coli.
Species	Human
Source	E.coli
ProteinLength	Ser21-Ala135
Form	Lyophilized powder/frozen liquid
Molecular Mass	15.00 kDa
Purity	> 90 % as determined by SDS-PAGE
Notes	For research use only.
Storage	Use a manual defrost freezer and avoid repeated freeze thaw cycles. Store at 2 to 8 centigrade for one week. Store at -20 to -80 centigrade for twelve months from the date of receipt.
Storage Buffer	0.01M PBS, pH 7.4, 0.02 % NLS
Reconstitution	Reconstitute in sterile water for a stock solution.

 Tel: 1-631-559-9269 1-516-512-3133

 Email: info@creative-biomart.com  Fax: 1-631-938-8127

 45-1 Ramsey Road, Shirley, NY 11967, USA

Shipping They are shipped out with dry ice/blue ice unless customers require otherwise.

GENE INFORMATION

Gene Name [RSPO1 R-spondin 1 \[Homo sapiens \(human\) \]](#)

Official Symbol [RSPO1](#)

Synonyms RSPO1; R-spondin 1; R spondin homolog (Xenopus laevis); R-spondin-1; FLJ40906; RSPONDIN; R-spondin homolog; roof plate-specific spondin-1; RSPO; CRISTIN3; RP11-566C13.1;

Gene ID [284654](#)

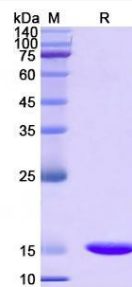
mRNA Refseq [NM_001038633](#)

Protein Refseq [NP_001033722](#)

MIM [609595](#)

UniProt ID [Q2MKA7](#)

SDS-PAGE



 Tel: 1-631-559-9269 1-516-512-3133

 Email: info@creative-biomart.com  Fax: 1-631-938-8127

 45-1 Ramsey Road, Shirley, NY 11967, USA