

Recombinant Human RSPO1 protein(31-263aa), His-Avi-tagged

Cat. No. RSPO1-7532H Lot. No. (See product label)

SPECIFICATION

Product Overview	Recombinant Human RSPO1 protein(Q2MKA7)(31-263aa), fused with C-terminal His and Avi tag, was expressed in HEK293.
Species	Human
Source	HEK293
ProteinLength	31-263aa
Form	Lyophilized from a 0.2 µm filtered 20 mM Tris-HCl, 0.5 M NaCl, 6% Trehalose, pH 8.0
Bio-activity	Measured by its binding ability in a functional ELISA. Immobilized Human RSPO1 at 2 µg/mL can bind Human LGR5, the EC50 is 124.0-174.1 ng/mL.
Molecular Mass	30.2 kDa
Endotoxin	Less than 1.0 EU/ug as determined by LAL method.
Purity	Greater than 95% as determined by SDS-PAGE.
Storage	Store at -20°C/-80°C upon receipt, aliquoting is necessary for mutiple use. Avoid repeated freeze-thaw cycles.
Reconstitution	We recommend that this vial be briefly centrifuged prior to opening to bring the contents to the bottom. Please reconstitute protein in deionized sterile water to a

 Tel: 1-631-559-9269 1-516-512-3133

 Email: info@creative-biomart.com  Fax: 1-631-938-8127

 45-1 Ramsey Road, Shirley, NY 11967, USA

concentration of 0.1-1.0 mg/mL. We recommend to add 5-50% of glycerol (final concentration) and aliquot for long-term storage at -20°C/-80°C.

AA Sequence

RISAEGSQACAKGCELCSEVNGCLKCSPKLFILLERNDIRQVGVCLPSCPPGYFDAR
 NPDMNKCIKCKIEHCEACFSHNFCTKCKEGLYLHKGRCYPACPEGSSAANGTMECS
 SPAQCEMSEWSPWGPCSKKQQLCGFRRGSEERTRRVLHAPVGDHAACSDTKETR
 RCTVRRVPCPEGQKRRKGGQGRRENANRNLARKESKEAGAGSRRRKGGQQQQQ
 QGTVGPLTSAGPA

GENE INFORMATION

Gene Name [RSPO1 R-spondin 1 \[Homo sapiens \]](#)

Official Symbol [RSPO1](#)

Synonyms [RSPO1](#); [R-spondin 1](#); [R spondin homolog \(Xenopus laevis\)](#); [R-spondin-1](#); [FLJ40906](#); [RSPONDIN](#); [R-spondin homolog](#); [roof plate-specific spondin-1](#); [RSPO](#); [CRISTIN3](#); [RP11-566C13.1](#);

Gene ID [284654](#)

mRNA Refseq [NM_001038633](#)

Protein Refseq [NP_001033722](#)

MIM [609595](#)

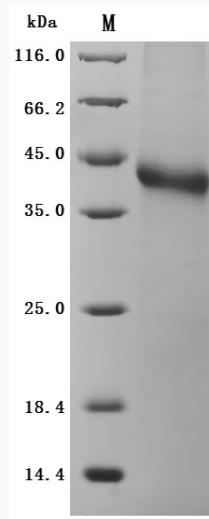
UniProt ID [Q2MKA7](#)

 Tel: 1-631-559-9269 1-516-512-3133

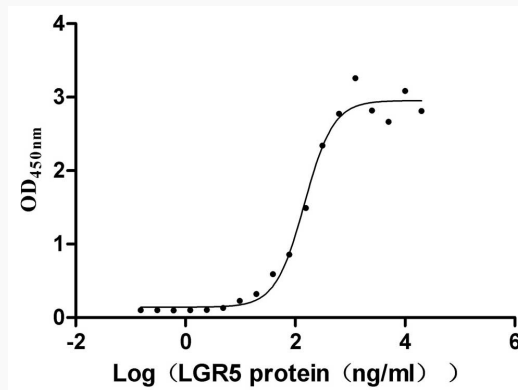
 Email: info@creative-biomart.com  Fax: 1-631-938-8127

 45-1 Ramsey Road, Shirley, NY 11967, USA

SDS-PAGE



Activity



 Tel: 1-631-559-9269 1-516-512-3133

 Email: info@creative-biomart.com  Fax: 1-631-938-8127

 45-1 Ramsey Road, Shirley, NY 11967, USA