

Recombinant Human RSPO3 Protein

Cat. No. RSPO3-35H Lot. No. (See product label)

SPECIFICATION

Product Overview	<p>Recombinant human R-spondin 3 protein without tag was expressed in E. coli. Animal-free (AOF) and carrier protein-free.</p> <p>Mass spectrometry: single species with expected mass. Analytical reversed-phase: single sharp peak. Recovery from stock vial: >95%</p>
Species	Human
Source	E.coli
Description	<p>This gene belongs to the R-spondin family. The encoded protein plays a role in the regulation of Wnt (wingless-type MMTV integration site family)/beta-catenin and Wnt/planar cell polarity (PCP) signaling pathways, which are involved in development, cell growth and disease pathogenesis. Genome-wide association studies suggest a correlation of this gene with bone mineral density and risk of fracture. This gene may be involved in tumor development.</p>
Molecular Mass	17 kDa
Endotoxin	<0.005 EU/µg protein (below level of detection)
Applications	Intestinal organoid culture
Storage	Resuspend in 10mM HCl at >100 µg/mL, prepare single use aliquots, add carrier protein if desired and store frozen at -20 or -80 centigrade

 Tel: 1-631-559-9269 1-516-512-3133

 Email: info@creative-biomart.com  Fax: 1-631-938-8127

 45-1 Ramsey Road, Shirley, NY 11967, USA

Storage Buffer Lyophilized from acetonitrile, TFA

GENE INFORMATION

Gene Name [RSPO3 R-spondin 3 \[Homo sapiens \(human\) \]](#)

Official Symbol [RSPO3](#)

Synonyms RSPO3; R-spondin 3; PWTSR; THSD2; CRISTIN1;

Gene ID [84870](#)

mRNA Refseq [NM_032784](#)

Protein Refseq [NP_116173](#)

MIM [610574](#)

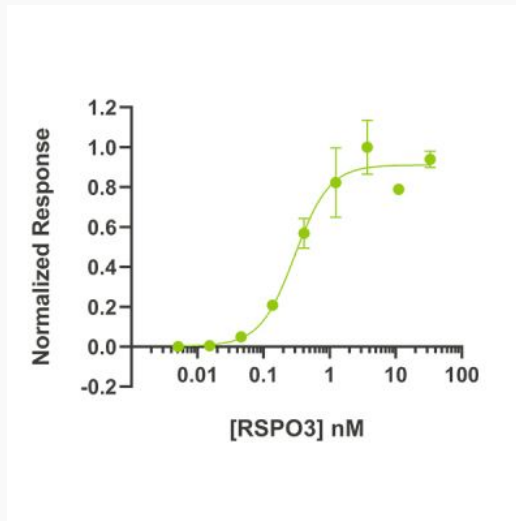
UniProt ID [Q9BXY4](#)

 Tel: 1-631-559-9269 1-516-512-3133

 Email: info@creative-biomart.com  Fax: 1-631-938-8127

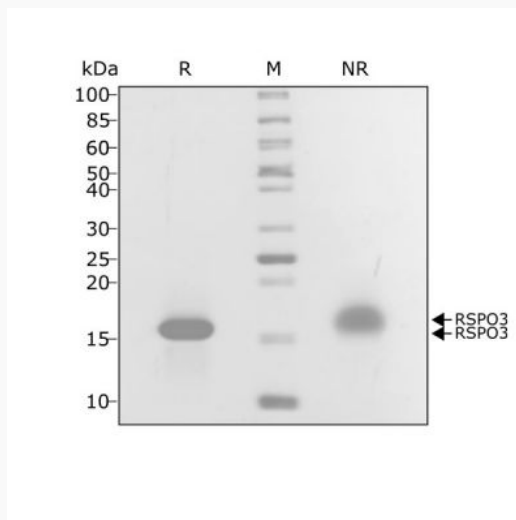
 45-1 Ramsey Road, Shirley, NY 11967, USA

Bioactivity



Bioactivity using a Wnt reporter assay in HEK293T cells. HEK293T cells transfected with Wnt-responsive firefly luciferase reporter TOPflash are treated with increasing concentrations of R-spondin 3 in the presence of Wnt-conditioned media (1: 8 dilution), in triplicate. The following day, luciferase activity is measured by luminescence. EC50 = 4.02 ng/mL (0.3 nM).

Purity




Tel: 1-631-559-9269 1-516-512-3133

Email: info@creative-biomart.com Fax: 1-631-938-8127

45-1 Ramsey Road, Shirley, NY 11967, USA



R-spondin 3 bioactive domain migrates at 17 kDa in non-reducing conditions and upon reduction (+ β ME). Purified recombinant protein was resolved using 15% w/v SDS-PAGE in reduced and non-reduced conditions and stained with Coomassie Brilliant Blue R250.

 Tel: 1-631-559-9269 1-516-512-3133

 Email: info@creative-biomart.com  Fax: 1-631-938-8127

 45-1 Ramsey Road, Shirley, NY 11967, USA