

Active Recombinant Human RSPO3 protein, His-tagged

Cat. No. RSPO3-3883H Lot. No. (See product label)

SPECIFICATION

Product Overview	Active Recombinant Human RSPO3 protein(Q9BXY4-1)(Gln22-Val146) is expressed from HEK293 with His tag at the C-Terminus.
Species	Human
Source	HEK293
ProteinLength	22-146 aa
Form	Lyophilized from 0.22µm filtered solution in PBS (pH 7.4).
Bio-activity	Immobilized Human R-Spondin 3, His Tag at 1µg/ml (100µl/well) on the plate. Dose response curve for Human RNF43, hFc Tag with the EC50 of 25.2ng/ml determined by ELISA.
Molecular Mass	The protein has a predicted MW of 14.95 kDa. Due to glycosylation, the protein migrates to 20-25 kDa and 26-32 kDa based on Bis-Tris PAGE result.
Endotoxin	Less than 1 EU per µg by the LAL method.
Purity	> 95% as determined by Bis-Tris PAGE
Storage	Store at -20 to -80°C for 12 months as supplied from date of receipt. -80°C for 3 months after reconstitution. Recommend to aliquot the protein into smaller quantities for optimal storage. Please minimize freeze-thaw cycles.

 Tel: 1-631-559-9269 1-516-512-3133

 Email: info@creative-biomart.com  Fax: 1-631-938-8127

 45-1 Ramsey Road, Shirley, NY 11967, USA

Reconstitution	Dissolve the lyophilized protein in distilled water.
protein Refseq-Weblink	http://www.ncbi.nlm.nih.gov/protein/NP_116173.2
Unit ID	Q9BXY4
Unit ID-Weblink	https://www.uniprot.org/uniprotkb/Q9BXY4

GENE INFORMATION

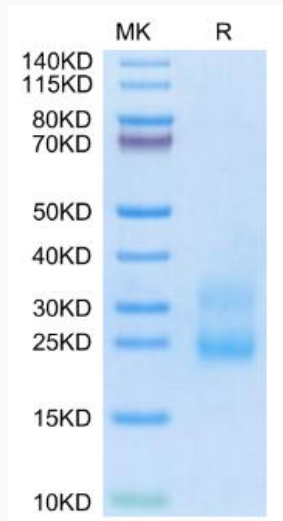
Gene Name	RSPO3 R-spondin 3 [Homo sapiens]
Official Symbol	RSPO3
Synonyms	RSPO3; R-spondin 3; R spondin 3 homolog (Xenopus laevis), thrombospondin, type I, domain containing 2, THSD2; R-spondin-3; FLJ14440; R-spondin 3 homolog; roof plate-specific spondin-3; protein with TSP type-1 repeat; thrombospondin, type I, domain containing 2; thrombospondin type-1 domain-containing protein 2; PWTSR; THSD2; CRISTIN1;
Gene ID	84870
mRNA Refseq	NM_032784
protein Refseq	NP_116173
MIM	610574

 Tel: 1-631-559-9269 1-516-512-3133

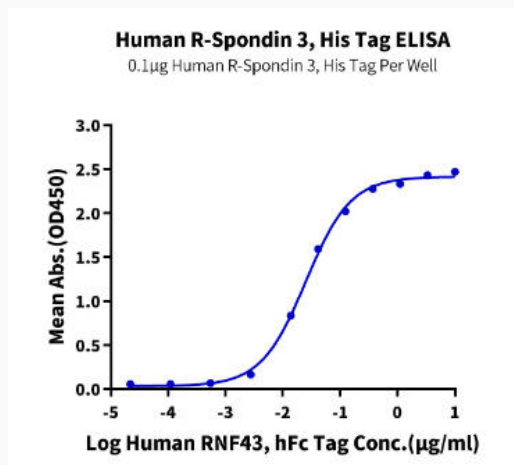
 Email: info@creative-biomart.com  Fax: 1-631-938-8127

 45-1 Ramsey Road, Shirley, NY 11967, USA

Bis-Tris PAGE



ELISA Data



 Tel: 1-631-559-9269 1-516-512-3133

 Email: info@creative-biomart.com  Fax: 1-631-938-8127

 45-1 Ramsey Road, Shirley, NY 11967, USA