

Recombinant Human RTEL1 Over-expression Lysate, C-Myc/DDK tagged

Cat. No. RTEL1-15HCL Lot. No. (See product label)

SPECIFICATION

Product Overview	Recombinant Transient overexpression lysate of regulator of telomere elongation helicase 1 (RTEL1), transcript variant 2 with C-Myc/DDK tag was expressed in HEK293T.
Species	Human
Source	HEK293
Description	This gene encodes a DNA helicase which functions in the stability, protection and elongation of telomeres and interacts with proteins in the shelterin complex known to protect telomeres during DNA replication. Mutations in this gene have been associated with dyskeratosis congenita and Hoyerall-Hreidarsson syndrome. Read-through transcription of this gene into the neighboring downstream gene, which encodes tumor necrosis factor receptor superfamily, member 6b, generates a non-coding transcript. Alternative splicing results in multiple transcript variants encoding different isoforms.
Molecular Mass	142.8 kDa
Stability	Lysate samples are stable for 12 months from the date of receipt when stored at -80 centigrade.
Storage	Upon receiving, store the sample at -80 centigrade. Also after dilution, the protein sample should be aliquoted and stored at -80 centigrade for long term storage. Avoid

 Tel: 1-631-559-9269 1-516-512-3133

 Email: info@creative-biomart.com  Fax: 1-631-938-8127

 45-1 Ramsey Road, Shirley, NY 11967, USA

repeated freeze-thaw cycles.

Reconstitution Lysate samples can be diluted with 2xSDS Sample Buffer provided.

Shipping The lysate is shipped with dry ice.

GENE INFORMATION

Gene Name RTEL1 regulator of telomere elongation helicase 1 [Homo sapiens (human)]

Official Symbol RTEL1

Synonyms RTEL1; regulator of telomere elongation helicase 1; NHL; RTEL; DKCA4; DKCB5; PFBMFT3; C20orf41; regulator of telomere elongation helicase 1; regulator of telomere length; EC 3.6.4.12

Gene ID 51750

mRNA Refseq NM_032957

Protein Refseq NP_116575

MIM 608833

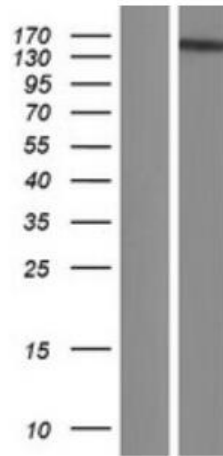
UniProt ID Q9NZ71

 Tel: 1-631-559-9269 1-516-512-3133

 Email: info@creative-biomart.com  Fax: 1-631-938-8127

 45-1 Ramsey Road, Shirley, NY 11967, USA

WB



 Tel: 1-631-559-9269 1-516-512-3133

 Email: info@creative-biomart.com  Fax: 1-631-938-8127

 45-1 Ramsey Road, Shirley, NY 11967, USA