

Recombinant Human RTN1 Protein, MYC/DDK-tagged, C13 and N15-labeled

Cat. No. RTN1-157H **Lot. No.** (See product label)

SPECIFICATION

Product Overview	RTN1 MS Standard C13 and N15-labeled recombinant protein (NP_066959) with a C-terminal MYC/DDK tag, was expressed in HEK293 cells.
Species	Human
Source	HEK293
Description	This gene belongs to the family of reticulon encoding genes. Reticulons are associated with the endoplasmic reticulum, and are involved in neuroendocrine secretion or in membrane trafficking in neuroendocrine cells. This gene is considered to be a specific marker for neurological diseases and cancer, and is a potential molecular target for therapy. Alternative splicing results in multiple transcript variants.
Molecular Mass	83.4 kDa
AA Sequence	MAAPGDPQDELLPLAGPGSQWLRHRGEGENEAVTPKGATPAPQAGEPSPGLGAR AREAASREAGSGPARQSPVAMETASTGVAGVSSAMDHTFSTTSKDGEGSCYTSLIS DICYPPQEDSTYFTGILQKENGHVITISESPEELGTPGPSLPDVPGIESRGLFSSDSGI EMTPAESTEVENKILADPLDQMKAAYKYIDITRPEEVKHQEQHHPELEDKDLDFKNK DTDISIKPEGVREPKPAPVEGKIIKDHLLLEESTFAPYIDDLSEEQRRAPQITTPVKITL TEIEPSVETTTQEKTPEKQDICKPSPDTVPTVTVSEPEDDSPGSITPPSSGTEPSAA ESQGKGSISEDELITAIKEAKGLSYETAENPRPVGQLADRPEVKARSGPPTIPSPLDH EASSAESGDSEIELVSEDPMAAEDALPSGYVSFGHVGGPPSPASPSIQYSILREER

 Tel: 1-631-559-9269 1-516-512-3133

 Email: info@creative-biomart.com  Fax: 1-631-938-8127

 45-1 Ramsey Road, Shirley, NY 11967, USA

EAELDSELIIESCDASSASEESPKREQDSPPMKPSALDAIREETGVRAEERAPSRRG
 LAEPGSFLDYPSTEPQPGPELPPGDGALEPETPMLPRKPEEDSSSNQSPAATKGGP
 PLGPGAPPLLFLNKQKAIDLLYWRDIKQTGIVFGSFLLLFSLTQFSVVSVVAYLALA
 ALSATISFRIYKSVLQAVQKTDEGHPFKAYLELEITLSQEIQKYTDCLQFYVNSTLKE
 LRRLFLVQDLVDSLKFAVLMWLLTYVGALFNGLTLLMAVSMFTLPVVVVKHQAQI
 DQYLGLVRTHINAVVAKIQAKIPGAKRHAETRTRPLEQKLISEEDLAANDILDYKDDDD
 KV

Purity > 80% as determined by SDS-PAGE and Coomassie blue staining

Stability Stable for 3 months from receipt of products under proper storage and handling conditions.

Storage Store at -80 centigrade. Avoid repeated freeze-thaw cycles.

Concentration 50 µg/mL as determined by BCA

Storage Buffer 100 mM glycine, 25 mM Tris-HCl, pH 7.3.

GENE INFORMATION

Gene Name RTN1 reticulon 1 [Homo sapiens (human)]

Official Symbol RTN1

Synonyms RTN1; reticulon 1; NSP; reticulon-1; neuroendocrine-specific protein

Gene ID 6252

mRNA Refseq NM_021136

 Tel: 1-631-559-9269 1-516-512-3133

 Email: info@creative-biomart.com  Fax: 1-631-938-8127

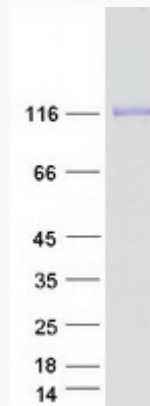
 45-1 Ramsey Road, Shirley, NY 11967, USA

Protein Refseq NP_066959

MIM 600865

UniProt ID Q16799

SDS-PAGE



 Tel: 1-631-559-9269 1-516-512-3133

 Email: info@creative-biomart.com  Fax: 1-631-938-8127

 45-1 Ramsey Road, Shirley, NY 11967, USA