

Recombinant Full Length Human RTN1 Protein, C-Flag-tagged

Cat. No. RTN1-891HFL Lot. No. (See product label)

SPECIFICATION

Product Overview	Recombinant Full Length Human RTN1 Protein, fused to Flag-tag at C-terminus, was expressed in Mammalian cells.
Species	Human
Source	Mammalian Cells
Description	This gene belongs to the family of reticulon encoding genes. Reticulons are associated with the endoplasmic reticulum, and are involved in neuroendocrine secretion or in membrane trafficking in neuroendocrine cells. This gene is considered to be a specific marker for neurological diseases and cancer, and is a potential molecular target for therapy. Alternative splicing results in multiple transcript variants.
Form	25 mM Tris HCl, pH 7.3, 100 mM glycine, 10% glycerol.
Molecular Mass	83.4 kDa
AA Sequence	MAAPGDPQDELLPLAGPGSQWLRHRGEGENEAVTPKGATPAPQAGEPSPGLGAR AREAASREAGSGPARQ SPVAMETASTGVAGVSSAMDHTFSTTSKDGE GSCYTSLI SDICYPPQEDSTYFTGILQKENGHVTISESP EELGTPGPSLPDVPGIESRGLFSSDS GIEMTPAESTEVENKILADPLDQMKA EAYKYIDITRPEEVKHQEQ HHPELEDKDLDFK NKDTDISIKPEGVREPKPAPVEGKIIKDHLLEESTFAPYIDDLSEEQRRAPQITTP VKI TLTEIEPSVETTTQEKTPEKQDICKPSPDTPVPTVTVSEPEDDSPGSITPPSSGTEPS AAESQGKGS ISEDELITAIKEAKGLSYETAENPRPVGQLADRPEVKARSGPPTIPSPL DHEASSAESGDSEIELVSEDP MAAEDALPSGYVSFGHVGGPPSPASPSIQYSILRE

 Tel: 1-631-559-9269 1-516-512-3133

 Email: info@creative-biomart.com  Fax: 1-631-938-8127

 45-1 Ramsey Road, Shirley, NY 11967, USA

EREAELDSELIIESCDASSASEESPKREQDSPPM KPSALDAIREETGVRAEERAPSR
 RGLAEPGSFLDYPSTEPQPGPELPPGDGALEPETPMLPRKPEEDSSS NQSPAATK
 GPGPLGPGAPPLLFLNKQKAIDLLYWRDIKQTGIVFGSFLLLLFSLTQFSVVSVVAYL
 ALA ALSATISFRIYKSVLQAVQKTDEGHPPFKAYLELEITLSQEIQKYTDCLQFYVNST
 LKELRRFLVQDLV DSLKFAVLMWLLTYVGALFNGLTLLLMAVVSMFTLPVVYVKHQ
 AQIDQYLGLVRTHINAVVAKIQAKIPG
 AKRHAETRTRPLEQKLISEEDLAANDILDYKDDDDKV

Purity > 80% as determined by SDS-PAGE and Coomassie blue staining.

Stability Stable for 12 months from the date of receipt of the product under proper storage and handling conditions. Avoid repeated freeze-thaw cycles.

Storage Store at -80 centigrade.

Concentration >50 ug/mL as determined by microplate BCA method.

Preparation Recombinant protein was captured through anti-DDK affinity column followed by conventional chromatography steps.

Protein Families Transmembrane

Full Length Full L.

GENE INFORMATION

Gene Name RTN1 reticulon 1 [Homo sapiens (human)]

Official Symbol RTN1

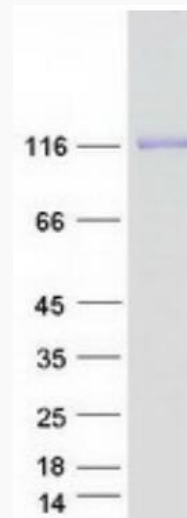
Synonyms NSP

 Tel: 1-631-559-9269 1-516-512-3133

 Email: info@creative-biomart.com  Fax: 1-631-938-8127

 45-1 Ramsey Road, Shirley, NY 11967, USA

Gene ID	6252
mRNA Refseq	NM_021136.3
Protein Refseq	NP_066959.1
MIM	600865
UniProt ID	Q16799



Coomassie blue staining of purified RTN1 protein,

Tel: 1-631-559-9269 1-516-512-3133

Email: info@creative-biomart.com Fax: 1-631-938-8127

45-1 Ramsey Road, Shirley, NY 11967, USA