

Recombinant Human RTN4RL2 Protein, His tagged

Cat. No. RTN4RL2-001H Lot. No. (See product label)

SPECIFICATION

Species	Human
Source	Insect Cells
ProteinLength	28-401 aa
Description	Enables signaling receptor activity. Predicted to be involved in cell surface receptor signaling pathway; corpus callosum development; and negative regulation of neuron projection development. Located in cell surface and plasma membrane.
Molecular Mass	43 kDa
AA Sequence	MAPSCPMLCTCYSSPPTVSCQANNFSSVPLSLPPSTQRLFLQNNLIRTLRPGTFGSN LLTLWLFSNNLSTIYPGTRHLQALEELDLGDNRHRSLEPDTFQGLERLQSLHLYRC QLSSLPGNIFRGLVSLQYLYLQENSLHLQDDLFADLANLSHLFLHGNRLRLLTEHVF RGLGSLDRLLLHGNRLQGVHRAAFRGLSRLTILYLFNNSLASLPGEALADLPSLEFLR LNANPWACDCRARPLWAWFQRARVSSSDVTCATPPERQGRDLRALREADFQACP PAAPTRPGSRARGNSSSNHLYGVAEAGAPPADPSTLYRDLPAEDSRGRQGGDAPT EDDYWGGYGGEDQRGEQMCPGAACQAPPDSRGPALHHHHHHHHH
Endotoxin	< 1 EU/μg by LAL
Purity	> 80% by SDS-PAGE
Storage	Store it under sterile conditions at -20 to -80 centigrade. It is recommended that the

 Tel: 1-631-559-9269 1-516-512-3133

 Email: info@creative-biomart.com  Fax: 1-631-938-8127

 45-1 Ramsey Road, Shirley, NY 11967, USA



protein be aliquoted for optimal storage. Avoid repeated freeze-thaw cycles.

Storage Buffer Sterile PBS, pH7.4, 5% Trehalose, 0.1% SKL

Concentration 1 mg/mL by BCA

GENE INFORMATION

Gene Name RTN4RL2 reticulon 4 receptor like 2 [Homo sapiens (human)]

Official Symbol RTN4RL2

Synonyms RTN4RL2; reticulon 4 receptor like 2; NgR2; NGRH1; reticulon-4 receptor-like 2; Nogo-66 receptor homolog 1; nogo receptor-like 3; nogo-66 receptor-related protein 2

Gene ID 349667

mRNA Refseq NM_178570

Protein Refseq NP_848665

MIM 610462

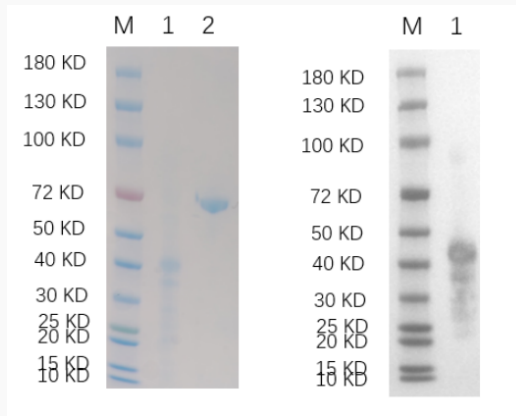
UniProt ID Q86UN3

 Tel: 1-631-559-9269 1-516-512-3133

 Email: info@creative-biomart.com  Fax: 1-631-938-8127

 45-1 Ramsey Road, Shirley, NY 11967, USA

**Reducing 4%-20%
SDS-PAGE (CBB
stained) and WB
(Anti-His Mouse
Monoclonal
Antibody) analysis
profiles of purified
RTN4RL2**



1. RTN4RL2 2. BSA

 Tel: 1-631-559-9269 1-516-512-3133

 Email: info@creative-biomart.com  Fax: 1-631-938-8127

 45-1 Ramsey Road, Shirley, NY 11967, USA