

Recombinant Human RUFY1 Protein, Myc/DDK-tagged, C13 and N15-labeled

Cat. No. RUFY1-2119H Lot. No. (See product label)

SPECIFICATION

Product Overview	RUFY1 MS Standard C13 and N15-labeled recombinant protein (NP_079434) with a C-terminal MYC/DDK tag, was expressed in HEK293 cells.
Species	Human
Source	HEK293
Description	This gene encodes a protein that contains a RUN domain and a FYVE-type zinc finger domain. The encoded protein binds to phosphatidylinositol-3-phosphate (PI3P) and plays a role in early endosomal trafficking, tethering and fusion through interactions with small GTPases including Rab4, Rab5 and Rab14. Alternatively spliced transcript variants encoding multiple isoforms have been observed for this gene.
Molecular Mass	79.6 kDa
AA Sequence	MADREGGCAAGRGRELEPELEPGPGPSALEPGEEFEIVDRSQLPGPGDLRSATR PRAAEGWSAPILTLARRATGNLSASCGSALRAAAGLGGGDSGDGTARAASKCQMM EERANLMHMMKLSIKVLLQSALSLSLGRSLDADHAPLQQFFVMEHCLKHGLKVKKSF GQNKSFPGPLELVEKLCPEASDIATSVRNLPELKTAVGRGRAWLYLALMQKKLADYL KVLIDNKHLLSEFYEPEALMMEEEGMVIVGLLVGLNVLDANLCLKGEDLDSQVGVIDF SLYLKDVQDLDDGGKEHERITDVLQKNYVEELNRHLSCTVGDQLTKIDGLEKTNSKL QEELSAATDRICSLQEEQQQLREQNELIRERSEKSVEITKQDTKVELETYKQTRQGL DEMYSVVKQLKEEKKVRLELEKELELQIGMKTEMEIAMKLEKDTHEKQDTLVALR

 Tel: 1-631-559-9269 1-516-512-3133

 Email: info@creative-biomart.com  Fax: 1-631-938-8127

 45-1 Ramsey Road, Shirley, NY 11967, USA

QQLEEVKAINLQMFHKAQNAESSLQQKNEAITSFEGKTNQVMSSMKQMEERLQHS
 ERARQGAEERSHKLQQELGGRIGALQLQLSQLHEQCSSLEKELKSEKEQRQALQRE
 LQHEKDTSSLLRMELQQVEGLKKELRELQDEKAELQKICEEQEQALQEMGLHLSQS
 KLKMEDIKEVNQALKGHAWLKDDEATHCRQCEKEFSISRKRHHCRNCGHIFCNTCS
 SNELALPSYPKPVRVCDSCHTLLLQRCSSASTRTRPLEQKLISEEDLAANDILDYKD
 DDDKV

Purity > 80% as determined by SDS-PAGE and Coomassie blue staining

Stability Stable for 3 months from receipt of products under proper storage and handling conditions.

Storage Store at -80 centigrade. Avoid repeated freeze-thaw cycles.

Concentration 50 µg/mL as determined by BCA

Storage Buffer 100 mM glycine, 25 mM Tris-HCl, pH 7.3.

GENE INFORMATION

Gene Name [RUFY1 RUN and FYVE domain containing 1 \[Homo sapiens \(human\) \]](#)

Official Symbol [RUFY1](#)

Synonyms RUFY1; RUN and FYVE domain containing 1; RUN and FYVE domain-containing protein 1; FLJ22251; RABIP4; ZFYVE12; Ia-binding protein 1; FYVE-finger protein EIP1; rab4-interacting protein; zinc finger FYVE domain-containing protein 12;

Gene ID [80230](#)

mRNA Refseq [NM_025158](#)

 Tel: 1-631-559-9269 1-516-512-3133

 Email: info@creative-biomart.com  Fax: 1-631-938-8127

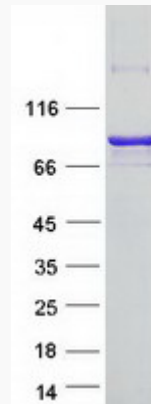
 45-1 Ramsey Road, Shirley, NY 11967, USA

Protein Refseq NP_079434

MIM 610327

UniProt ID Q96T51

SDS-PAGE



 Tel: 1-631-559-9269 1-516-512-3133

 Email: info@creative-biomart.com  Fax: 1-631-938-8127

 45-1 Ramsey Road, Shirley, NY 11967, USA