

# Recombinant Human RUFY4 Protein, Myc/DDK-tagged, C13 and N15-labeled

Cat. No. RUFY4-1811H Lot. No. (See product label)

## SPECIFICATION

### Product Overview

RUFY4 MS Standard C13 and N15-labeled recombinant protein (NP\_940885) with a C-terminal MYC/DDK tag, was expressed in HEK293 cells.

### Species

Human

### Source

HEK293

### Description

Positively regulates macroautophagy in primary dendritic cells. Increases autophagic flux, probably by stimulating both autophagosome formation and facilitating tethering with lysosomes. Binds to phosphatidylinositol 3-phosphate (PtdIns3P) through its FYVE-type zinc finger.

### Molecular Mass

44.9 kDa

### AA Sequence

MFSESRCSSSTQTQGRRPRKNKDAPKKIPAAAYGGPENVQIEDSHTSQAICLQDAPS  
 GQQLAGLPRSQQQRHLPFFLEKKGESSRKHRYPQSMWEPEGKELQLDQEERAPWI  
 EIFLGNSTPSTQGQKGAMGTQKEVIGMEAEVTGVLLVAEGQRTTEGTHKKEAEWS  
 HVQRLLMPSPRGAVEGAVSGSRQSGSSILGEPWVLQGHATKEDSTVENPQVQT  
 EVTLVARREEQAEVSLQDEIKSLRLGLRKAEEQAQRQEQLLREQEGELQALREQLS  
 RCQEERAELQAQLEKQQAERRDAMYQEELGGQRDLVQAMKRRVLELIQEKDRL  
 WQRLQHLSSMAPECCVACSKIFGRFSRRYPCRLCGLLCHACSM DYKKRDRCCPP  
 CAQGREAQVTTTRTRPLEQKLISEEDLAANDILDYKDDDDKV

### Purity

> 80% as determined by SDS-PAGE and Coomassie blue staining

 Tel: 1-631-559-9269 1-516-512-3133

 Email: [info@creative-biomart.com](mailto:info@creative-biomart.com)  Fax: 1-631-938-8127

 45-1 Ramsey Road, Shirley, NY 11967, USA



<b>Stability</b>	Stable for 3 months from receipt of products under proper storage and handling conditions.
<b>Storage</b>	Store at -80 centigrade. Avoid repeated freeze-thaw cycles.
<b>Concentration</b>	50 µg/mL as determined by BCA
<b>Storage Buffer</b>	100 mM glycine, 25 mM Tris-HCl, pH 7.3.

## GENE INFORMATION

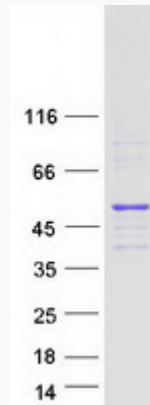
<b>Gene Name</b>	RUFY4 RUN and FYVE domain containing 4 [ Homo sapiens (human) ]
<b>Official Symbol</b>	RUFY4
<b>Synonyms</b>	RUFY4; RUN and FYVE domain containing 4; RUN and FYVE domain-containing protein 4; FLJ46536;
<b>Gene ID</b>	285180
<b>mRNA Refseq</b>	NM_198483
<b>Protein Refseq</b>	NP_940885
<b>UniProt ID</b>	Q6ZNE9

Tel: 1-631-559-9269 1-516-512-3133

Email: [info@creative-biomart.com](mailto:info@creative-biomart.com) Fax: 1-631-938-8127

45-1 Ramsey Road, Shirley, NY 11967, USA

**SDS-PAGE**



 Tel: 1-631-559-9269 1-516-512-3133

 Email: [info@creative-biomart.com](mailto:info@creative-biomart.com)  Fax: 1-631-938-8127

 45-1 Ramsey Road, Shirley, NY 11967, USA