

Active Recombinant Full Length Human RUNX1 Protein, C-Flag-tagged

Cat. No. RUNX1-188HFL **Lot. No.** (See product label)

SPECIFICATION

Product Overview	Recombinant Full Length Human RUNX1 Protein, fused to Flag-tag at C-terminus, was expressed in Mammalian cells.
Species	Human
Source	Mammalian Cells
Description	Core binding factor (CBF) is a heterodimeric transcription factor that binds to the core element of many enhancers and promoters. The protein encoded by this gene represents the alpha subunit of CBF and is thought to be involved in the development of normal hematopoiesis. Chromosomal translocations involving this gene are well-documented and have been associated with several types of leukemia. Three transcript variants encoding different isoforms have been found for this gene.
Form	25 mM Tris HCl, pH 7.3, 100 mM glycine, 10% glycerol.
Bio-activity	RUNX1 Activity verified in a DNA-binding assay
Molecular Mass	48.6 kDa
AA Sequence	MRIPVDASTSRRFTPPSTALSPGKMSEALPLGAPDAGAALAGKLRSGDRSMVEVLA DHPGELVRTDSPNF LCSVLPTHWRCNKTLPIAFKVVALGDVPDGTGLVTVMAGNDEN YSAELRNATAAMKNQVARFNDLRFVGRS GRGKSFTLTITVFTNPPQVATYHRAIKIT VDGPREPRRHRQKLLDDQTKPGSLSFSERLSELEQLRRTAMR VSPHHPAPTPNPRA

 Tel: 1-631-559-9269 1-516-512-3133

 Email: info@creative-biomart.com  Fax: 1-631-938-8127

 45-1 Ramsey Road, Shirley, NY 11967, USA



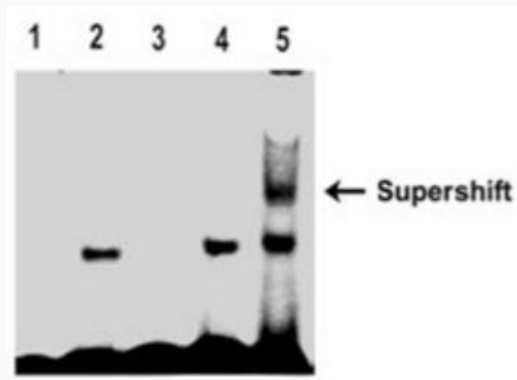
SLNHSTAFNPQPQSQMQRTRQIQPSPWYSYDQSYQYLGSIASPSVHPATPISPGRA
 SGMTTLSAELSSRLSTAPDLTAFSDPRQFPALPSISDPRMHYPGAFTYSPTPVTSGI
 GIGMSAMGSATRY HTYLPPPYPGSSQAQGGPFQASSPSYHLYYGASAGSYQFSM
 VGGERSPPRILPPCTNASTGSALLNPSLP
 NQSDVVEAEGSHSNSPTNMAPSARLEEAVWRPYTRTRPLEQKLISEEDLAANDILDY
 KDDDDKV

Purity	> 80% as determined by SDS-PAGE and Coomassie blue staining.
Stability	Stable for 12 months from the date of receipt of the product under proper storage and handling conditions. Avoid repeated freeze-thaw cycles.
Storage	Store at -80 centigrade.
Concentration	>50 ug/mL as determined by microplate BCA method.
Preparation	Recombinant protein was captured through anti-DDK affinity column followed by conventional chromatography steps.
Protein Families	Druggable Genome, ES Cell Differentiation/IPS, Transcription Factors
Protein Pathways	Acute myeloid leukemia, Chronic myeloid leukemia, Pathways in cancer
Full Length	Full L.

GENE INFORMATION

Gene Name	RUNX1 RUNX family transcription factor 1 [Homo sapiens (human)]
Official Symbol	RUNX1

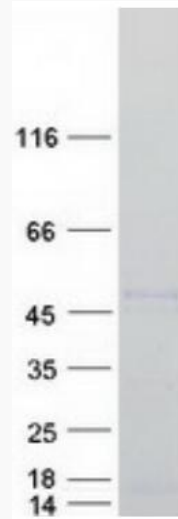
Synonyms	AML1; CBFA2; EVI-1; AMLCR1; PEBP2aB; CBF2alpha; AML1-EVI-1; PEBP2alpha
Gene ID	861
mRNA Refseq	NM_001001890.3
Protein Refseq	NP_001001890.1
MIM	151385
UniProt ID	Q01196



Tel: 1-631-559-9269 1-516-512-3133

Email: info@creative-biomart.com Fax: 1-631-938-8127

45-1 Ramsey Road, Shirley, NY 11967, USA



Coomassie blue staining of purified RUNX1 protein.

Tel: 1-631-559-9269 1-516-512-3133

Email: info@creative-biomart.com Fax: 1-631-938-8127

45-1 Ramsey Road, Shirley, NY 11967, USA