

# Recombinant Human RUNX1 Protein (Met1-Tyr480), N-His and SUMO tagged

**Cat. No.** RUNX1-6649H    **Lot. No.** (See product label)

## SPECIFICATION

<b>Product Overview</b>	Recombinant human RUNX1 (Met1-Tyr480) fused with the N-terminal His Tag & sumo tag was expressed in E. coli.
<b>Species</b>	Human
<b>Source</b>	E.coli
<b>ProteinLength</b>	Met1-Tyr480
<b>Form</b>	Lyophilized powder/frozen liquid
<b>Molecular Mass</b>	64.8 kDa
<b>Purity</b>	> 90 % as determined by SDS-PAGE
<b>Notes</b>	For research use only.
<b>Storage</b>	Use a manual defrost freezer and avoid repeated freeze thaw cycles. Store at 2 to 8 centigrade for one week. Store at -20 to -80 centigrade for twelve months from the date of receipt.
<b>Storage Buffer</b>	Supplied as solution form in PBS, pH 7.5 or lyophilized from PBS, pH 7.5.
<b>Reconstitution</b>	Reconstitute in sterile water for a stock solution.

 Tel: 1-631-559-9269    1-516-512-3133

 Email: [info@creative-biomart.com](mailto:info@creative-biomart.com)     Fax: 1-631-938-8127

 45-1 Ramsey Road, Shirley, NY 11967, USA

**Shipping** They are shipped out with dry ice/blue ice unless customers require otherwise.

## GENE INFORMATION

**Gene Name** [RUNX1 runt-related transcription factor 1 \[ Homo sapiens \(human\) \]](#)

**Official Symbol** [RUNX1](#)

**Synonyms**

RUNX1; runt-related transcription factor 1; acute myeloid leukemia 1, AML1, CBFA2; aml1 oncogene; AMLCR1; PEBP2A2; CBF-alpha-2; PEA2-alpha B; PEBP2-alpha B; oncogene AML-1; AML1-EVI-1 fusion protein; acute myeloid leukemia 1 protein; core-binding factor subunit alpha-2; SL3-3 enhancer factor 1 alpha B subunit; SL3/AKV core-binding factor alpha B subunit; core-binding factor, runt domain, alpha subunit 2; polyomavirus enhancer-binding protein 2 alpha B subunit; AML1; CBFA2; EVI-1; PEBP2aB; AML1-EVI-1;

**Gene ID** [861](#)

**mRNA Refseq** [NM\\_001001890](#)

**Protein Refseq** [NP\\_001001890](#)

**MIM** [151385](#)

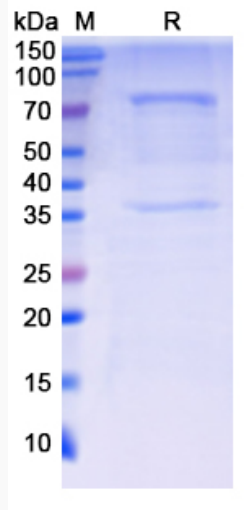
**UniProt ID** [Q01196](#)

 Tel: 1-631-559-9269 1-516-512-3133

 Email: [info@creative-biomart.com](mailto:info@creative-biomart.com)  Fax: 1-631-938-8127

 45-1 Ramsey Road, Shirley, NY 11967, USA

SDS-PAGE



 Tel: 1-631-559-9269 1-516-512-3133

 Email: [info@creative-biomart.com](mailto:info@creative-biomart.com)  Fax: 1-631-938-8127

 45-1 Ramsey Road, Shirley, NY 11967, USA