

Recombinant Human RUSC1 protein, His-tagged

Cat. No. RUSC1-2473H **Lot. No.** (See product label)

SPECIFICATION

Product Overview	Recombinant Human RUSC1 protein(10-224 aa), fused with N-terminal His tag, was expressed in E.coli.
Species	Human
Source	E.coli
ProteinLength	10-224 aa
Form	The purified protein was lyophilized from sterile phosphate-buffered saline (PBS: 58 mM Na ₂ HPO ₄ , 17 mM NaH ₂ PO ₄ , 68 mM NaCl, pH 7.4). Prior to lyophilization, 5% (w/v) trehalose and 5% (w/v) mannitol were incorporated as cryoprotective excipients. The protein was eluted with a buffer containing 300 mM imidazole.
AASequence	QLQEQQKGLLIAVSVDKIISHFGAARNLVQKAQLGDSRLSPDVGHLVLTTLCPALH ALVADGLKPFKDLITGQRRSSPWSVVEASVKPGSSTRSLGTLYSQVSRLAPLSSSR SRFHAFILGLLNTKQLELWFSSLQEDAGLLSLLYLPTGFFSLARGGCPSTELLLLLLQ PLSVLTFHLDLLFEHHHLPLGPPQAPAPPGPPALQQTMQ
Purity	80%, by SDS-PAGE with Coomassie Brilliant Blue staining.
Storage	Store at 2-8°C for 1-2 weeks. Aliquot and store at -20°C to -80°C for up to 3 months, reconstitution with sterile water and addition of an equal volume of glycerol. Avoid repeat freeze-thaw cycles.

 Tel: 1-631-559-9269 1-516-512-3133

 Email: info@creative-biomart.com  Fax: 1-631-938-8127

 45-1 Ramsey Road, Shirley, NY 11967, USA



Reconstitution

Dissolve the product in 200 µl sterile water to achieve a working concentration of 0.25 g/µl. If experimental compatibility allows, mix the aqueous solution with an equal volume of glycerol (1:1 ratio) after initial reconstitution.

GENE INFORMATION

Gene Name

RUSC1 RUN and SH3 domain containing 1 [Homo sapiens]

Official Symbol

RUSC1

Synonyms

RUSC1; RUN and SH3 domain containing 1; RUN and SH3 domain-containing protein 1; NESCA; new molecule containing SH3 at the carboxy-terminus; DKFZp761A1822;

Gene ID

23623

mRNA Refseq

NM_001105203

Protein Refseq

NP_001098673

UniProt ID

Q9BVN2

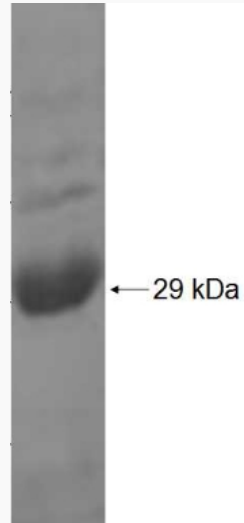
 Tel: 1-631-559-9269 1-516-512-3133

 Email: info@creative-biomart.com  Fax: 1-631-938-8127

 45-1 Ramsey Road, Shirley, NY 11967, USA



SDS-PAGE



Tel: 1-631-559-9269 1-516-512-3133

Email: info@creative-biomart.com Fax: 1-631-938-8127

45-1 Ramsey Road, Shirley, NY 11967, USA