

Recombinant Human RUSC1 Protein, Myc/DDK-tagged, C13 and N15-labeled

Cat. No. RUSC1-872H **Lot. No.** (See product label)

SPECIFICATION

Product Overview	RUSC1 MS Standard C13 and N15-labeled recombinant protein (NP_055143) with a C-terminal MYC/DDK tag, was expressed in HEK293 cells.
Species	Human
Source	HEK293
Description	Putative signaling adapter which may play a role in neuronal differentiation. May be involved in regulation of NGF-dependent neurite outgrowth. Proposed to play a role in neuronal vesicular trafficking, specifically involving pre-synaptic membrane proteins. Seems to be involved in signaling pathways that are regulated by the prolonged activation of MAPK. Can regulate the polyubiquitination of IKBKG and thus may be involved in regulation of the NF-kappa-B pathway.
Molecular Mass	46.6 kDa
AA Sequence	MAEAQSGTGQLQEQQKGLLIAVSVSVDKIISHFGAARNLVQKAQLGDSRLSPDVGHL VLTTLCPALHALVADGLKPFKDLITGQRRSSPWSVVEASVKPGSSTRSLGTLYSQV SRLAPLSSSRSRFHAFILGLLNTKQLELWFSSLQEDAGLLSLLYLPTGFFSLARGGCP SLSTELLLLLQPLSVLTFHLDLLFEHHHHLPLGPPQAPAPPGPPALQQTMQAMLHF GGRLAQSLRGTSKEAASDPSPNLPTPGSWWEQLTQASRVYASGGTEGFPLSR WAPGRHGTAEEGAQERPLPTDEMAPGRGLWLGRLFGVPGGPAENENGALKSRR PSSWLPPTVSVLALVKRGAPPEMSPQELEASAPRMVQTHRAVRALCDHTAARPD

 Tel: 1-631-559-9269 1-516-512-3133

 Email: info@creative-biomart.com  Fax: 1-631-938-8127

 45-1 Ramsey Road, Shirley, NY 11967, USA

QLSFRRGEVLRVITTVDEDEDWLRCGRDGMEGLVPVGYTSLVLTRTRPLEQKLISEEDL
AANDILDYKDDDDKV

Purity > 80% as determined by SDS-PAGE and Coomassie blue staining

Stability Stable for 3 months from receipt of products under proper storage and handling conditions.

Storage Store at -80 centigrade. Avoid repeated freeze-thaw cycles.

Concentration 50 µg/mL as determined by BCA

Storage Buffer 100 mM glycine, 25 mM Tris-HCl, pH 7.3.

GENE INFORMATION

Gene Name RUSC1 RUN and SH3 domain containing 1 [Homo sapiens (human)]

Official Symbol RUSC1

Synonyms RUSC1; RUN and SH3 domain containing 1; RUN and SH3 domain-containing protein 1; NESCA; new molecule containing SH3 at the carboxy-terminus; DKFZp761A1822;

Gene ID 23623

mRNA Refseq NM_014328

Protein Refseq NP_055143

MIM 617318

 Tel: 1-631-559-9269 1-516-512-3133

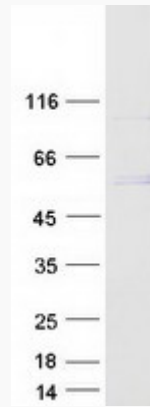
 Email: info@creative-biomart.com  Fax: 1-631-938-8127

 45-1 Ramsey Road, Shirley, NY 11967, USA

UniProt ID

Q9BVN2

SDS-PAGE



 Tel: 1-631-559-9269 1-516-512-3133

 Email: info@creative-biomart.com  Fax: 1-631-938-8127

 45-1 Ramsey Road, Shirley, NY 11967, USA