

Recombinant Human RUVBL1 Protein, Myc/DDK-tagged, C13 and N15-labeled

Cat. No. RUVBL1-1814H **Lot. No.** (See product label)

SPECIFICATION

Product Overview

RUVBL1 MS Standard C13 and N15-labeled recombinant protein (NP_003698) with a C-terminal MYC/DDK tag, was expressed in HEK293 cells.

Species

Human

Source

HEK293

Description

This gene encodes a protein that has both DNA-dependent ATPase and DNA helicase activities and belongs to the ATPases associated with diverse cellular activities (AAA+) protein family. The encoded protein associates with several multisubunit transcriptional complexes and with protein complexes involved in both ATP-dependent remodeling and histone modification. Alternate splicing results in multiple transcript variants.

Molecular Mass

50.2 kDa

AA Sequence

MKIEEVKSTTKTQRIASHSHVKGLGLDESGLAKQAASGLVGQENAREACGVIVELIKS
 KKMAGRAVLLAGPPGTGKTALALAI AQELGSKVPFCPMVGSEVYSTEIKKTEVLMEN
 FRRAIGLRIKETKEVYEGEVTELTPECETENPMGGYGKTISHVIIGLKTAKGTKQLKLDP
 SIFESLQKERVEAGDVIIYEANS GAVKRQGRCDTYATEFDLEAEYVPLPKGDVHKK
 KEIIQDVTLHDLVDANARPQGGQDILSMMGQLMKPKKTEITDKLRGEINKVVN KYIDQ
 GIAELVPGVLFVDEVHMLDIECF TYLHRALESSIAPIVIFASNRGN CVIRGTEDITSPHG
 IPLDLLDRVMIIRTMLYTPQEMKQIIKIRAQTEGINISEEALNHLGEIGTKTTLRYSVQLL

 Tel: 1-631-559-9269 1-516-512-3133

 Email: info@creative-biomart.com  Fax: 1-631-938-8127

 45-1 Ramsey Road, Shirley, NY 11967, USA

TPANLLAKINGKDSIEKEHVVEISELFYDAKSSAKILADQQDKYMKTRTRPLEQKLISE
EDLAANDILDYKDDDDKV

Purity > 80% as determined by SDS-PAGE and Coomassie blue staining

Stability Stable for 3 months from receipt of products under proper storage and handling conditions.

Storage Store at -80 centigrade. Avoid repeated freeze-thaw cycles.

Concentration 50 µg/mL as determined by BCA

Storage Buffer 100 mM glycine, 25 mM Tris-HCl, pH 7.3.

GENE INFORMATION

Gene Name [RUVBL1 RuvB like AAA ATPase 1 \[Homo sapiens \(human\) \]](#)

Official Symbol [RUVBL1](#)

Synonyms RUVBL1; RuvB like AAA ATPase 1; RuvB (E coli homolog) like 1; ruvB-like 1; ECP54; INO80 complex subunit H; INO80H; NMP238; pontin; Pontin52; RVB1; Rvb1; TIH1; TIP49; TIP49a; ECP-54; NMP 238; pontin 52; TAP54-alpha; nuclear matrix protein 238; RuvB (E coli homolog)-like 1; 49 kDa TBP-interacting protein; TIP60-associated protein 54-alpha; 54 kDa erythrocyte cytosolic protein; TATA binding protein interacting protein 49 kDa; 49 kDa TATA box-binding protein-interacting protein; PONTIN; TIP49A;

Gene ID [8607](#)

mRNA Refseq [NM_003707](#)

 Tel: 1-631-559-9269 1-516-512-3133

 Email: info@creative-biomart.com  Fax: 1-631-938-8127

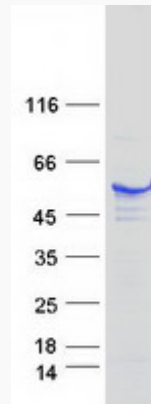
 45-1 Ramsey Road, Shirley, NY 11967, USA

Protein Refseq NP_003698

MIM 603449

UniProt ID Q9Y265

SDS-PAGE



 Tel: 1-631-559-9269 1-516-512-3133

 Email: info@creative-biomart.com  Fax: 1-631-938-8127

 45-1 Ramsey Road, Shirley, NY 11967, USA