

Recombinant Human RUVBL1 Protein (Met1-Lys456), N-His tagged

Cat. No. RUVBL1-6648H Lot. No. (See product label)

SPECIFICATION

Product Overview	Recombinant human RUVBL1 (Met1-Lys456) fused with the N-His tag was expressed in E. coli.
Species	Human
Source	E.coli
ProteinLength	Met1-Lys456
Form	Lyophilized powder/frozen liquid
Molecular Mass	52.54 kDa
Purity	> 90 % as determined by SDS-PAGE
Notes	For research use only.
Storage	Use a manual defrost freezer and avoid repeated freeze thaw cycles. Store at 2 to 8 centigrade for one week. Store at -20 to -80 centigrade for twelve months from the date of receipt.
Storage Buffer	0.01M PBS, pH 7.4, 0.02 % NLS
Reconstitution	Reconstitute in sterile water for a stock solution.

 Tel: 1-631-559-9269 1-516-512-3133

 Email: info@creative-biomart.com  Fax: 1-631-938-8127

 45-1 Ramsey Road, Shirley, NY 11967, USA

Shipping They are shipped out with dry ice/blue ice unless customers require otherwise.

GENE INFORMATION

Gene Name [RUVBL1 RuvB-like 1 \(E. coli\) \[Homo sapiens \(human\) \]](#)

Official Symbol [RUVBL1](#)

Synonyms

RUVBL1; RuvB-like 1 (E. coli); RuvB (E coli homolog) like 1; ruvB-like 1; ECP54; INO80 complex subunit H; INO80H; NMP238; pontin; Pontin52; RVB1; Rvb1; TIH1; TIP49; TIP49a; ECP-54; NMP 238; pontin 52; TAP54-alpha; nuclear matrix protein 238; RuvB (E coli homolog)-like 1; 49 kDa TBP-interacting protein; TIP60-associated protein 54-alpha; 54 kDa erythrocyte cytosolic protein; TATA binding protein interacting protein 49 kDa; 49 kDa TATA box-binding protein-interacting protein; PONTIN; TIP49A;

Gene ID [8607](#)

mRNA Refseq [NM_003707](#)

Protein Refseq [NP_003698](#)

MIM [603449](#)

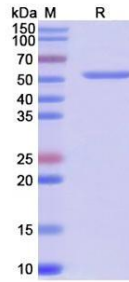
UniProt ID [Q9Y265](#)

 Tel: 1-631-559-9269 1-516-512-3133

 Email: info@creative-biomart.com  Fax: 1-631-938-8127

 45-1 Ramsey Road, Shirley, NY 11967, USA

SDS-PAGE



 Tel: 1-631-559-9269 1-516-512-3133

 Email: info@creative-biomart.com  Fax: 1-631-938-8127

 45-1 Ramsey Road, Shirley, NY 11967, USA