

Recombinant Human RUVBL1 protein, His-tagged

Cat. No. RUVBL1-7854H **Lot. No.** (See product label)

SPECIFICATION

Product Overview	Recombinant Human RUVBL1 protein(1-214 aa), fused with N-terminal His tag, was expressed in E.coli.
Species	Human
Source	E.coli
ProteinLength	1-214 aa
Form	The purified protein was lyophilized from sterile phosphate-buffered saline (PBS: 58 mM Na ₂ HPO ₄ , 17 mM NaH ₂ PO ₄ , 68 mM NaCl, pH 7.4). Prior to lyophilization, 5% (w/v) trehalose and 5% (w/v) mannitol were incorporated as cryoprotective excipients.
AASequence	MKIEEVKSTTKTQRIASHSHVKGLGLDESLAKQAASGLVGQENAREACGVIVELIKS KKMAGRAVLLAGPPGTGKTALALAI AQELGSKVFPFCPMVGSEVYSTEIKKTEVLMEN FRRAIGLRIKETKEVYEGEVTELTPECETENPMGGYGKTI SHVIIGLKTAKGTKQLKLDP SIFESLQKERVEAGDVIYIEANSGAVKRQGRCDTYATEFD
Purity	85%, by SDS-PAGE with Coomassie Brilliant Blue staining.
Storage	Store at 2-8°C for 1-2 weeks. Aliquot and store at -20°C to -80°C for up to 3 months, reconstitution with sterile water and addition of an equal volume of glycerol. Avoid repeat freeze-thaw cycles.

 Tel: 1-631-559-9269 1-516-512-3133

 Email: info@creative-biomart.com  Fax: 1-631-938-8127

 45-1 Ramsey Road, Shirley, NY 11967, USA

Reconstitution

Dissolve the product in 200 µl sterile water to achieve a working concentration of 0.25 g/µl. If experimental compatibility allows, mix the aqueous solution with an equal volume of glycerol (1:1 ratio) after initial reconstitution.

GENE INFORMATION

Gene Name

RUVBL1 RuvB-like 1 (E. coli) [Homo sapiens]

Official Symbol

RUVBL1

Synonyms

RUVBL1; RuvB-like 1 (E. coli); RuvB (E coli homolog) like 1; ruvB-like 1; ECP54; INO80 complex subunit H; INO80H; NMP238; pontin; Pontin52; RVB1; Rvb1; TIH1; TIP49; TIP49a; ECP-54; NMP 238; pontin 52; TAP54-alpha; nuclear matrix protein 238; RuvB (E coli homolog)-like 1; 49 kDa TBP-interacting protein; TIP60-associated protein 54-alpha; 54 kDa erythrocyte cytosolic protein; TATA binding protein interacting protein 49 kDa; 49 kDa TATA box-binding protein-interacting protein; PONTIN; TIP49A;

Gene ID

8607

mRNA Refseq

NM_003707

Protein Refseq

NP_003698

MIM

603449

UniProt ID

Q9Y265

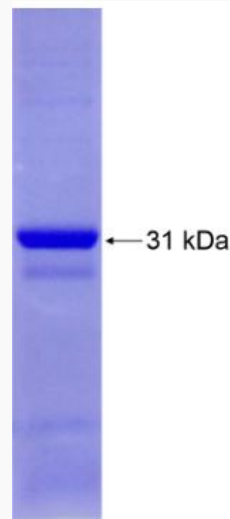
 Tel: 1-631-559-9269 1-516-512-3133

 Email: info@creative-biomart.com  Fax: 1-631-938-8127

 45-1 Ramsey Road, Shirley, NY 11967, USA



SDS-PAGE



Tel: 1-631-559-9269 1-516-512-3133

Email: info@creative-biomart.com Fax: 1-631-938-8127

45-1 Ramsey Road, Shirley, NY 11967, USA