

# Recombinant Full Length Human RUVBL1 Protein, C-Flag-tagged

**Cat. No.** RUVBL1-929HFL    **Lot. No.** (See product label)

## SPECIFICATION

<b>Product Overview</b>	Recombinant Full Length Human RUVBL1 Protein, fused to Flag-tag at C-terminus, was expressed in Mammalian cells.
<b>Species</b>	Human
<b>Source</b>	Mammalian Cells
<b>Description</b>	This gene encodes a protein that has both DNA-dependent ATPase and DNA helicase activities and belongs to the ATPases associated with diverse cellular activities (AAA+) protein family. The encoded protein associates with several multisubunit transcriptional complexes and with protein complexes involved in both ATP-dependent remodeling and histone modification. Alternate splicing results in multiple transcript variants.
<b>Form</b>	25 mM Tris HCl, pH 7.3, 100 mM glycine, 10% glycerol.
<b>Molecular Mass</b>	50 kDa
<b>AA Sequence</b>	MKIEEVKSTTKTQRIASHSHVKGLGLDESLAKQAASGLVGQENAREACGVIVELIKS KKMAGRAVLLAG PPGTGKTALALAI AQELGSKVPFCPMVGSEVYSTEIKKTEVLMEN FRRAIGLRIKETKEVYEGETELTP CETENPMGGYGKTISHVVIIGLKTAKGTKQLKLD PSIFESLQKERVEAGDVIIYEANSGAVKRQGRCDTYA TEFDLEAEEYVPLPKGDVHK KKEIIQDVTLHDLVDANARPQGGQDILSMMGQLMKPKKTEITDKLRGEIN KVVNKYID QGIAELVPGVLFVDEVHMLDIECFYTLHRALESSIPIVIFASNRGNCVIRGTEDITSPH

 Tel: 1-631-559-9269    1-516-512-3133

 Email: [info@creative-biomart.com](mailto:info@creative-biomart.com)     Fax: 1-631-938-8127

 45-1 Ramsey Road, Shirley, NY 11967, USA

GI PLDLLDRVMIIRTMLYTPQEMKQIIKIRAQTEGINISEEALNHLGEIGTKTTLRYSVQ  
 LLTPANLLAKIN  
 GKDSIEKEHVVEEISELFYDAKSSAKILADQQDKYMKTRTRPLEQKLISEEDLAANDILD  
 YKDDDDKV

<b>Purity</b>	> 80% as determined by SDS-PAGE and Coomassie blue staining.
<b>Stability</b>	Stable for 12 months from the date of receipt of the product under proper storage and handling conditions. Avoid repeated freeze-thaw cycles.
<b>Storage</b>	Store at -80 centigrade.
<b>Concentration</b>	>50 ug/mL as determined by microplate BCA method.
<b>Preparation</b>	Recombinant protein was captured through anti-DDK affinity column followed by conventional chromatography steps.
<b>Protein Families</b>	Stem cell - Pluripotency, Transcription Factors
<b>Protein Pathways</b>	Wnt signaling pathway
<b>Full Length</b>	Full L.

## GENE INFORMATION

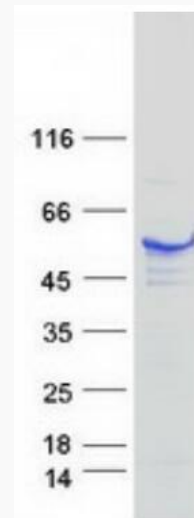
<b>Gene Name</b>	RUVBL1 RuvB like AAA ATPase 1 [ Homo sapiens (human) ]
<b>Official Symbol</b>	RUVBL1
<b>Synonyms</b>	RVB1; TIH1; ECP54; TIP49; ECP-54; INO80H; NMP238; PONTIN; TIP49A; NMP 238; Pontin52

 Tel: 1-631-559-9269 1-516-512-3133

 Email: [info@creative-biomart.com](mailto:info@creative-biomart.com)  Fax: 1-631-938-8127

 45-1 Ramsey Road, Shirley, NY 11967, USA

Gene ID	8607
mRNA Refseq	NM_003707.3
Protein Refseq	NP_003698.1
MIM	603449
UniProt ID	Q9Y265



Coomassie blue staining of purified RUVBL1 protein.

Tel: 1-631-559-9269 1-516-512-3133

Email: [info@creative-biomart.com](mailto:info@creative-biomart.com) Fax: 1-631-938-8127

45-1 Ramsey Road, Shirley, NY 11967, USA