

Recombinant Full Length Human RUVBL2 Protein, C-Flag-tagged

Cat. No. RUVBL2-1181HFL **Lot. No.** (See product label)

SPECIFICATION

Product Overview	Recombinant Full Length Human RUVBL2 Protein, fused to Flag-tag at C-terminus, was expressed in Mammalian cells.
Species	Human
Source	Mammalian Cells
Description	This gene encodes the second human homologue of the bacterial RuvB gene. Bacterial RuvB protein is a DNA helicase essential for homologous recombination and DNA double-strand break repair. Functional analysis showed that this gene product has both ATPase and DNA helicase activities. This gene is physically linked to the CGB/LHB gene cluster on chromosome 19q13.3, and is very close (55 nt) to the LHB gene, in the opposite orientation.
Form	25 mM Tris HCl, pH 7.3, 100 mM glycine, 10% glycerol.
Molecular Mass	51 kDa
AA Sequence	MATVTATTKVPEIRDVTRIERIGAHSHIRGLGLDDALEPRQASQGMVQQLAARRAAG VVLEMIREGKIAG RAVLIAGQP GTGKTAIAMGMAQALGPDPFTA IAGSEIFSLEMSK TEALTQAFRRSIGVRIKEETEII EG EVVEIQIDRPATGTGSKVGKLT LKTTMETIYDLG TKMIESLTKDKVQAGDVITIDKATGKISKLGRSFT RARDYDAMGSQTKFVQCPDGEL QKRKEVVHTVSLHEIDVINSRTQGFLALFSGDTGEIKSEVREQINAKV AEWREEGKA EIIPGVLFIDEVHMLDIESFSFLNRALES DMAPVLIMATNRGITRIRGTSYQSPHGIPIDL

 Tel: 1-631-559-9269 1-516-512-3133

 Email: info@creative-biomart.com  Fax: 1-631-938-8127

 45-1 Ramsey Road, Shirley, NY 11967, USA

LDRLIVSTTPYSEKDTKQLRIRCEEEDVEMSEDAYTVLTRIGLETSLRYAIQLITAASL
 VCRKRKGTE
 VQVDDIKRVYSLFLDESRSTQYMKEYQDAFLFNELKGETMDTSTRTRPLEQKLISEE
 DLAANDILDYKDDDDKV

Purity	> 80% as determined by SDS-PAGE and Coomassie blue staining.
Stability	Stable for 12 months from the date of receipt of the product under proper storage and handling conditions. Avoid repeated freeze-thaw cycles.
Storage	Store at -80 centigrade.
Concentration	>50 ug/mL as determined by microplate BCA method.
Preparation	Recombinant protein was captured through anti-DDK affinity column followed by conventional chromatography steps.
Protein Families	Transcription Factors
Full Length	Full L.

GENE INFORMATION

Gene Name	RUVBL2 RuvB like AAA ATPase 2 [Homo sapiens (human)]
Official Symbol	RUVBL2
Synonyms	RVB2; TIH2; ECP51; TIP48; CGI-46; ECP-51; INO80J; REPTIN; TIP49B; TAP54-beta
Gene ID	10856

 Tel: 1-631-559-9269 1-516-512-3133

 Email: info@creative-biomart.com  Fax: 1-631-938-8127

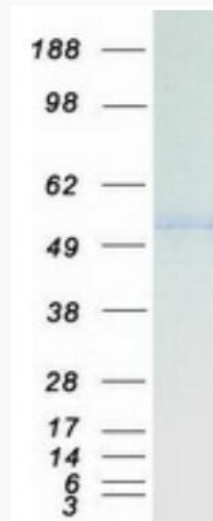
 45-1 Ramsey Road, Shirley, NY 11967, USA

mRNA Refseq [NM_006666.3](#)

Protein Refseq [NP_006657.1](#)

MIM [604788](#)

UniProt ID [Q9Y230](#)



Coomassie blue staining of purified RUVBL2 protein.

 Tel: 1-631-559-9269 1-516-512-3133

 Email: info@creative-biomart.com  Fax: 1-631-938-8127

 45-1 Ramsey Road, Shirley, NY 11967, USA