

## Recombinant Human RUVBL2 Protein, His-SUMO-tagged

**Cat. No.** RUVBL2-1360H    **Lot. No.** (See product label)

### SPECIFICATION

<b>Product Overview</b>	Recombinant Human RUVBL2 Protein (2-467aa) was expressed in E. coli with N-terminal His-SUMO tag.
<b>Species</b>	Human
<b>Source</b>	E.coli
<b>ProteinLength</b>	2-467 a.a.
<b>Description</b>	This gene encodes the second human homologue of the bacterial RuvB gene. Bacterial RuvB protein is a DNA helicase essential for homologous recombination and DNA double-strand break repair. Functional analysis showed that this gene product has both ATPase and DNA helicase activities. This gene is physically linked to the CGB/LHB gene cluster on chromosome 19q13.3, and is very close (55 nt) to the LHB gene, in the opposite orientation.
<b>Form</b>	Tris-based buffer, 50% glycerol.
<b>Molecular Mass</b>	67.0 kDa
<b>AA Sequence</b>	ATVTATTKVPEIRDVTRIERIGAHSHIRGLGLDDALEPRQASQGMVGLAARRAAGV VLEMIREGKIAGRAVLIAGQP GTGKTAI AMGMAQALGPDTPFTA IAGSEIFSLEMSKT EALTQAFRRSIGVRIKEETEII EGEVVEIQIDRPATGTGSKV GKLT LKTTEMETIYDLGT KMIESLTKDKVQAGDVITIDKATGKISKLGRSFTRARDYDAMGSQTKFVQCPDGELQ KRKEVVHTVSLHEIDVINSRTQGFLALFSGDTGEIKSEVREQINAKVAEWREEGKAEII

 Tel: 1-631-559-9269    1-516-512-3133

 Email: [info@creative-biomart.com](mailto:info@creative-biomart.com)     Fax: 1-631-938-8127

 45-1 Ramsey Road, Shirley, NY 11967, USA

PGVLFIDEVHMLDIESFSFLNRALES DMAPVLIMATNRGITRIRGTSYQSPHGIPIDLLD  
 RLLIVSTTPYSEKDTKQILRIRCEEEDVEMSEDAYTVLTRIGLETSLRYAIQLITAASLV  
 CRKRKGTEVQVDDIKRVYSLFLDES RSTQYMKEYQDAFLFNLKGETMDTS

**Purity** Greater than 90% as determined by SDS-PAGE.

**Storage** The shelf life of liquid form is 6 months at -20 centigrade/-80 centigrade. The shelf life of lyophilized form is 12 months at -20 centigrade/-80 centigrade.

## GENE INFORMATION

**Gene Name** [RUVBL2 RuvB like AAA ATPase 2 \[ Homo sapiens \(human\) \]](#)

**Official Symbol** [RUVBL2](#)

**Synonyms** RVB2; TIH2; ECP51; TIP48; CGI-46; ECP-51; INO80J; REPTIN; TIP49B; TAP54-beta; 48 kDa TATA box-binding protein-interacting protein; 48 kDa TBP-interacting protein; 51 kDa erythrocyte cytosolic protein; INO80 complex subunit J; RuvB (E coli homolog)-like 2; TIP60-associated protein 54-beta; erythrocyte cytosolic protein, 51-KD; repressing pontin 52; reptin52 protein

**Gene ID** [10856](#)

**mRNA Refseq** [NM\\_006666.2](#)

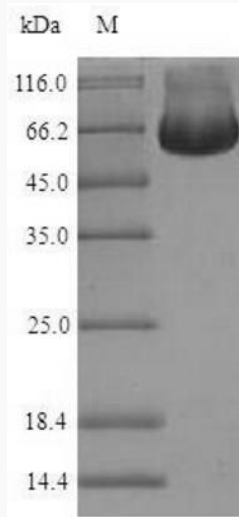
**Protein Refseq** [NP\\_006657.1](#)

**UniProt ID** [Q9Y230](#)

 Tel: 1-631-559-9269 1-516-512-3133

 Email: [info@creative-biomart.com](mailto:info@creative-biomart.com)  Fax: 1-631-938-8127

 45-1 Ramsey Road, Shirley, NY 11967, USA



Tel: 1-631-559-9269 1-516-512-3133

Email: [info@creative-biomart.com](mailto:info@creative-biomart.com) Fax: 1-631-938-8127

45-1 Ramsey Road, Shirley, NY 11967, USA