

Recombinant Human RUVBL2 Protein, Myc/DDK-tagged, C13 and N15-labeled

Cat. No. RUVBL2-3308H **Lot. No.** (See product label)

SPECIFICATION

Product Overview

RUVBL2 MS Standard C13 and N15-labeled recombinant protein (NP_006657) with a C-terminal MYC/DDK tag, was expressed in HEK293 cells.

Species

Human

Source

HEK293

Description

This gene encodes the second human homologue of the bacterial RuvB gene. Bacterial RuvB protein is a DNA helicase essential for homologous recombination and DNA double-strand break repair. Functional analysis showed that this gene product has both ATPase and DNA helicase activities. This gene is physically linked to the CGB/LHB gene cluster on chromosome 19q13.3, and is very close (55 nt) to the LHB gene, in the opposite orientation.

Molecular Mass

51.2 kDa

AA Sequence

MATVTATTKVPEIRDVTRIERIGAHSHIRGLGLDDALEPRQASQGMVQQLAARRAAG
 VVLEMIREGKIAGRAVLIAGQP GTGKTAIAMGMAQALGPDPFTAAGSEIFSLEMSK
 TEALTQAFRRSIGVRIKEETEIIIEGEVVEIQIDRPATGTGSKVGKLT LKTTMETIYDLG
 TKMIESLTKDKVQAGDVITIDKATGKISKLG RSFTRARDYDAMGSQTKFVQCPDGEL
 QKRKEVVHTVSLHEIDVINSRTQGFLALFSGDTGEIKSEVREQINAKVAEWREEGKA
 EIIPGVLFIDEVHMLDIESFSFLNRALES DMAPVLIMATNRGITRIRGTSYQSPHGIPIDL
 LDRLLIVSTTPYSEKDTKQILRIRCEEEDVEMSEDAYTVLTRIGLETSLRYAIQLITAASL

 Tel: 1-631-559-9269 1-516-512-3133

 Email: info@creative-biomart.com  Fax: 1-631-938-8127

 45-1 Ramsey Road, Shirley, NY 11967, USA

VCRKRKGTEVQVDDIKRVYSLFLDESRSTQYMKEYQDAFLFNELKGETMDTSTRTR
PLEQKLISEEDLAANDILDYKDDDDKV

Purity > 80% as determined by SDS-PAGE and Coomassie blue staining

Stability Stable for 3 months from receipt of products under proper storage and handling conditions.

Storage Store at -80 centigrade. Avoid repeated freeze-thaw cycles.

Concentration 50 µg/mL as determined by BCA

Storage Buffer 100 mM glycine, 25 mM Tris-HCl, pH 7.3.

GENE INFORMATION

Gene Name RUVBL2 RuvB like AAA ATPase 2 [Homo sapiens (human)]

Official Symbol RUVBL2

Synonyms RUVBL2; RuvB-like 2 (E. coli); RuvB (E coli homolog) like 2; ruvB-like 2; ECP51; INO80 complex subunit J; INO80J; reptin; Reptin52; Rvb2; RVB2; TIH2; TIP48; TIP49b; ECP-51; reptin 52; TAP54-beta; reptin52 protein; repressing pontin 52; RuvB (E coli homolog)-like 2; 48 kDa TBP-interacting protein; TBP-interacting protein, 48-KD; TIP60-associated protein 54-beta; 51 kDa erythrocyte cytosolic protein; erythrocyte cytosolic protein, 51-KD; 48 kDa TATA box-binding protein-interacting protein; CGI-46; REPTIN; TIP49B;

Gene ID 10856

mRNA Refseq NM_006666

 Tel: 1-631-559-9269 1-516-512-3133

 Email: info@creative-biomart.com  Fax: 1-631-938-8127

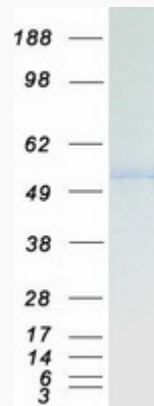
 45-1 Ramsey Road, Shirley, NY 11967, USA

Protein Refseq NP_006657

MIM 604788

UniProt ID Q9Y230

SDS-PAGE



 Tel: 1-631-559-9269 1-516-512-3133

 Email: info@creative-biomart.com  Fax: 1-631-938-8127

 45-1 Ramsey Road, Shirley, NY 11967, USA