

Recombinant Human RWDD1 Protein, Myc/DDK-tagged, C13 and N15-labeled

Cat. No. RWDD1-6634H **Lot. No.** (See product label)

SPECIFICATION

Product Overview	RWDD1 MS Standard C13 and N15-labeled recombinant protein (NP_001007465) with a C-terminal MYC/DDK tag, was expressed in HEK293 cells.
Species	Human
Source	HEK293
Description	RWDD1 (RWD Domain Containing 1) is a Protein Coding gene.
Molecular Mass	27.9 kDa
AA Sequence	MTDYGEEQRNELEALESIYPDSFTVLSENPPSFTITVTSEAGENDETVQTTLKFTYSE KYPDEAPLYEIFSQENLEDNDVSDILKLLALQAEENLGMVMIFTLVTAVQEKLNEIVDQ IKTRREEEKKQKEKEAEEAEKQLFHGTPVTIENFLNWKAKFDAELLEIKKKRMKEEEQ AGKNKLSGKQLFETDHNLDTSIQFLEDAGNNVEVDESLFQEMDDLEDEDDDPD YNPADPESDSADTRTRPLEQKLISEEDLAANDILDYKDDDDKV
Purity	> 80% as determined by SDS-PAGE and Coomassie blue staining
Stability	Stable for 3 months from receipt of products under proper storage and handling conditions.
Storage	Store at -80 centigrade. Avoid repeated freeze-thaw cycles.

 Tel: 1-631-559-9269 1-516-512-3133

 Email: info@creative-biomart.com  Fax: 1-631-938-8127

 45-1 Ramsey Road, Shirley, NY 11967, USA

Concentration 50 µg/mL as determined by BCA

Storage Buffer 100 mM glycine, 25 mM Tris-HCl, pH 7.3.

GENE INFORMATION

Gene Name RWDD1 RWD domain containing 1 [Homo sapiens (human)]

Official Symbol RWDD1

Synonyms RWDD1; RWD domain containing 1; CGI-24; PTD013; RWD domain-containing protein 1; DRG family-regulatory protein 2; DFRP2

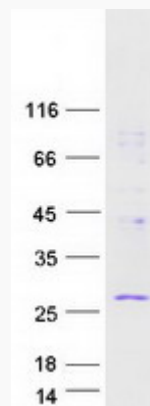
Gene ID 51389

mRNA Refseq NM_001007464

Protein Refseq NP_001007465

UniProt ID Q9H446

SDS-PAGE



 Tel: 1-631-559-9269 1-516-512-3133

 Email: info@creative-biomart.com  Fax: 1-631-938-8127

 45-1 Ramsey Road, Shirley, NY 11967, USA