

Recombinant Human RXFP1 protein, His-tagged

Cat. No. RXFP1-6983H Lot. No. (See product label)

SPECIFICATION

Product Overview	Recombinant Human RXFP1 aa. (Pro110~Ala259 (Accession # Q9HBX9)) fused with N-terminal His tag was produced in E. coli cells.
Species	Human
Source	E.coli
ProteinLength	Pro110~Ala259
Description	This gene encodes a member of the leucine-rich repeat-containing subgroup of the G protein-coupled 7-transmembrane receptor superfamily. The encoded protein plays a critical role in sperm motility, pregnancy and parturition as a receptor for the protein hormone relaxin. Decreased expression of this gene may play a role in endometriosis. Alternatively spliced transcript variants encoding multiple isoforms have been observed for this gene.
Form	Freeze-dried powder
Molecular Mass	Predicted Molecular Mass: 19.2kDa
Endotoxin	<1.0EU per 1g (determined by the LAL method)
Purity	>95%
Characteristic	The isoelectric point is 8.9.

 Tel: 1-631-559-9269 1-516-512-3133

 Email: info@creative-biomart.com  Fax: 1-631-938-8127

 45-1 Ramsey Road, Shirley, NY 11967, USA

Applications	SDS-PAGE; WB; ELISA; IP
Stability	The thermal stability is described by the loss rate. The loss rate was determined by accelerated thermal degradation test, that is, incubate the protein at 37°C for 48h, and no obvious degradation and precipitation were observed. The loss rate is less than 5% within the expiration date under appropriate storage condition.
Storage	Avoid repeated freeze/thaw cycles. Store at 2-8°C for one month. Aliquot and store at -80°C for 12 months.
Storage buffer	Supplied as lyophilized form in PBS, pH7.4, containing 5% sucrose, 0.01% sarcosyl.
Reconstitution	Reconstitute in sterile PBS, pH7.2-pH7.4.

GENE INFORMATION

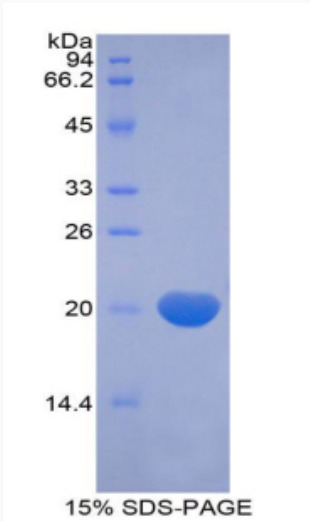
Gene Name	RXFP1 relaxin/insulin like family peptide receptor 1 [Homo sapiens (human)]
Official Symbol	RXFP1
Synonyms	RXFP1; relaxin/insulin like family peptide receptor 1; LGR7; RXFPR1; relaxin receptor 1; leucine-rich repeat-containing G protein-coupled receptor 7
Gene ID	59350
mRNA Refseq	NM_001253728.1
Protein Refseq	NP_001240657.1
UniProt ID	Q9HBX9

 Tel: 1-631-559-9269 1-516-512-3133

 Email: info@creative-biomart.com  Fax: 1-631-938-8127

 45-1 Ramsey Road, Shirley, NY 11967, USA

SDS-PAGE



 Tel: 1-631-559-9269 1-516-512-3133

 Email: info@creative-biomart.com  Fax: 1-631-938-8127

 45-1 Ramsey Road, Shirley, NY 11967, USA