

Recombinant Human RXFP2 protein, His&Myc-tagged

Cat. No. RXFP2-5733H Lot. No. (See product label)

SPECIFICATION

Product Overview	Recombinant Human RXFP2 protein(Q8WXD0)(33-158aa), fused with N-terminal His tag and C-terminal Myc tag, was expressed in E.coli.
Species	Human
Source	E.coli
ProteinLength	33-158a.a.
Tag	His&Myc
Form	If the delivery form is liquid, the default storage buffer is Tris/PBS-based buffer, 5%-50% glycerol. If the delivery form is lyophilized powder, the buffer before lyophilization is Tris/PBS-based buffer, 6% Trehalose, pH 8.0.
Molecular Mass	21.1 kDa
Purity	Greater than 90% as determined by SDS-PAGE.
Storage	Store at -20°C/-80°C upon receipt, aliquoting is necessary for mutiple use. Avoid repeated freeze-thaw cycles.
Reconstitution	We recommend that this vial be briefly centrifuged prior to opening to bring the contents to the bottom. Please reconstitute protein in deionized sterile water to a concentration of 0.1-1.0 mg/mL.We recommend to add 5-50% of glycerol (final

 Tel: 1-631-559-9269 1-516-512-3133

 Email: info@creative-biomart.com  Fax: 1-631-938-8127

 45-1 Ramsey Road, Shirley, NY 11967, USA

concentration) and aliquot for long-term storage at -20°C/-80°C.

AA Sequence

FALTQGSMITPSCQKGYFPCGNLTKCLPRAFHCDCGKDDCGNGADEENCGDTSQWA
TIFGTVHGNANSVALTQECFLKQYPQCCDCKETELECVNGDLKSVPMISNNVTLTSL
KKNKIHSPLDKVFI

GENE INFORMATION

Gene Name

RXFP2 relaxin/insulin-like family peptide receptor 2 [Homo sapiens]

Official Symbol

RXFP2

Synonyms

RXFP2; relaxin/insulin-like family peptide receptor 2; leucine rich repeat containing G protein coupled receptor 8 , LGR8; relaxin receptor 2; GPR106; GREAT; INSL3R; RXFPR2; G-protein coupled receptor 106; relaxin family peptide receptor 2; G protein coupled receptor affecting testicular descent; G-protein coupled receptor affecting testicular descent; leucine-rich repeat-containing G protein-coupled receptor 8; leucine-rich repeat-containing G-protein coupled receptor 8; LGR8; LGR8.1;

Gene ID

122042

mRNA Refseq

NM_001166058

Protein Refseq

NP_001159530

MIM

606655

UniProt ID

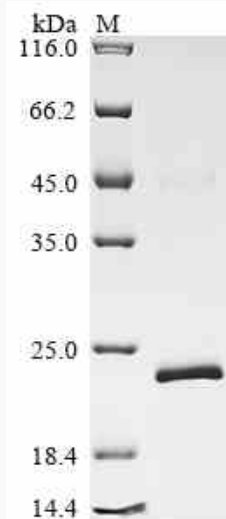
Q8WXD0

 Tel: 1-631-559-9269 1-516-512-3133

 Email: info@creative-biomart.com  Fax: 1-631-938-8127

 45-1 Ramsey Road, Shirley, NY 11967, USA

SDS-PAGE



 Tel: 1-631-559-9269 1-516-512-3133

 Email: info@creative-biomart.com  Fax: 1-631-938-8127

 45-1 Ramsey Road, Shirley, NY 11967, USA