

## Recombinant Bovine RXRA, His-tagged

**Cat. No.** RXRA-1399B    **Lot. No.** (See product label)

### SPECIFICATION

<b>Product Overview</b>	Recombinant Bovine RXRA(NP_001291272.1), fused to His tag, was expressed in E. coli.
<b>Species</b>	Bovine
<b>Source</b>	E.coli
<b>Form</b>	PBS, pH 7.4.
<b>Molecular Mass</b>	The protein has a calculated MW of 51.93 kDa.
<b>AA Sequence</b>	MHHHHHHTK HFLPLDFSTQ VNSSLSSPT ARSSMAAPSL HPSLGPSIGS SLGSPGQLHS PISTLSSPIN GMGPPFSVIS SPMGPHSMSV PTTPTLGFGT GSPQLSSPMN PVSSSEDIKP PLGLNGVLKV PAHPSGNMAS FTKHICAICG DRSSGKHYGV YSCEGCKGFF KRTVRKDLTY TCRDNKDCLI DKRQRNRCQY CRYQKCLAMG MKREAVQEER QRGKDRGESE VESSSSANED MPVEKILEAE LAVEPKTETY VEANVGLNPS SPNDPVTNIC QAADKQLFTL VEWAKRIPHF SELPLDDQVI LLRAGWNELL IASFSHRISIA VKDGILLATG LHVHRNSAHS AGVGAI FDRV LTELVSKMRD MQMDKTELGC LRAIVLFNPD SKGLSNPAEV EALREKVYAS LEAYCKHKYP EQPGRFAKLL LRLPALRSIG LKCLEHLFFF KLIGDTPIDT FLMEMLEAPH QMT
<b>Purity</b>	>85%, by SDS-PAGE
<b>Storage</b>	Store it under sterile conditions at -20 to -80 °C. It is recommended that the protein be

 Tel: 1-631-559-9269    1-516-512-3133

 Email: [info@creative-biomart.com](mailto:info@creative-biomart.com)     Fax: 1-631-938-8127

 45-1 Ramsey Road, Shirley, NY 11967, USA

aliquoted for optimal storage. Avoid repeated freeze-thaw cycles.

**Concentration** 0.15 mg/ml

## GENE INFORMATION

**Gene Name** RXRA retinoid X receptor alpha [ Bos taurus (cattle) ]

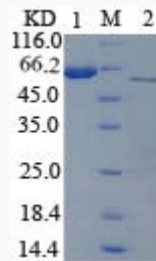
**Official Symbol** RXRA

**Gene ID** 507554

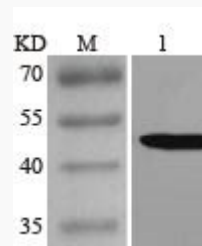
**mRNA Refseq** NM\_001304343.1

**Protein Refseq** NP\_001291272.1

### SDS-PAGE



### Western Blot



Tel: 1-631-559-9269 1-516-512-3133

Email: [info@creative-biomart.com](mailto:info@creative-biomart.com) Fax: 1-631-938-8127

45-1 Ramsey Road, Shirley, NY 11967, USA