

Recombinant Human RYR1 Protein, His&GST-tagged

Cat. No. RYR1-2037H **Lot. No.** (See product label)

SPECIFICATION

Product Overview	Recombinant Human RYR1 Protein (His97-Cys392) with N-His&GST tag was expressed in E. coli.
Species	Human
Source	E.coli
ProteinLength	His97-Cys392
Description	This gene encodes a ryanodine receptor found in skeletal muscle. The encoded protein functions as a calcium release channel in the sarcoplasmic reticulum but also serves to connect the sarcoplasmic reticulum and transverse tubule. Mutations in this gene are associated with malignant hyperthermia susceptibility, central core disease, and minicore myopathy with external ophthalmoplegia. Alternatively spliced transcripts encoding different isoforms have been described.
Form	Freeze-dried powder
Molecular Mass	Predicted Molecular Mass: 63.2 kDa Accurate Molecular Mass: 63 kDa
Purity	> 95%
Applications	Positive Control; Immunogen; SDS-PAGE; WB.

 Tel: 1-631-559-9269 1-516-512-3133

 Email: info@creative-biomart.com  Fax: 1-631-938-8127

 45-1 Ramsey Road, Shirley, NY 11967, USA

Stability	The thermal stability is described by the loss rate. The loss rate was determined by accelerated thermal degradation test, that is, incubate the protein at 37 centigrade for 48h, and no obvious degradation and precipitation were observed. The loss rate is less than 5% within the expiration date under appropriate storage condition.
Storage	Avoid repeated freeze/thaw cycles. Store at 2-8 centigrade for one month. Aliquot and store at -80 centigrade for 12 months.
Storage Buffer	20mM Tris, 150mM NaCl, pH8.0, containing 1mM EDTA, 1mM DTT, 0.01% SKL, 5% Trehalose and Proclin300.
Reconstitution	Reconstitute in 20mM Tris, 150mM NaCl (pH8.0) to a concentration of 0.1-1.0 mg/mL. Do not vortex.

GENE INFORMATION

Gene Name	RYR1 ryanodine receptor 1 [Homo sapiens (human)]
Official Symbol	RYR1
Synonyms	Ryr1; ryanodine receptor 1; RYR-1; Ryr1l; ryanodine receptor 1; ryanodine receptor 1 (skeletal); ryanodine receptor 1, skeletal muscle; ryanodine receptor 1-like, skeletal muscle; skeletal muscle calcium release channel; skeletal muscle ryanodine receptor; skeletal muscle-type ryanodine receptor; type 1 ryanodine receptor
Gene ID	6261
mRNA Refseq	NM_000540
Protein Refseq	NP_000531

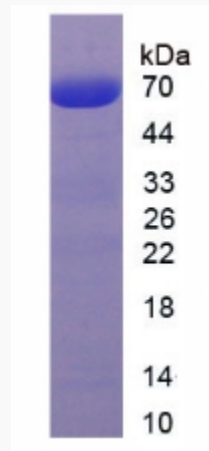
 Tel: 1-631-559-9269 1-516-512-3133

 Email: info@creative-biomart.com  Fax: 1-631-938-8127

 45-1 Ramsey Road, Shirley, NY 11967, USA

MIM 180901

UniProt ID P21817



Tel: 1-631-559-9269 1-516-512-3133

Email: info@creative-biomart.com Fax: 1-631-938-8127

45-1 Ramsey Road, Shirley, NY 11967, USA