

## Recombinant Human RYR1 Protein (1-534 aa), His-tagged

**Cat. No.** RYR1-789H    **Lot. No.** (See product label)

### SPECIFICATION

<b>Product Overview</b>	Recombinant Human RYR1 Protein (1-534 aa) is produced by E. coli expression system. This protein is fused with a 6xHis tag at the N-terminal. Research Area: Transport. Protein Description: Partial.
<b>Species</b>	Human
<b>Source</b>	E.coli
<b>ProteinLength</b>	1-534 aa
<b>Description</b>	Calcium channel that mediates the release of Ca <sup>2+</sup> from the sarcoplasmic reticulum into the cytoplasm and thereby plays a key role in triggering muscle contraction following depolarization of T-tubules. Repeated very high-level exercise increases the open probability of the channel and leads to Ca <sup>2+</sup> leaking into the cytoplasm. Can also mediate the release of Ca <sup>2+</sup> from intracellular stores in neurons, and may thereby promote prolonged Ca <sup>2+</sup> signaling in the brain. Required for normal bryonic development of muscle fibers and skeletal muscle. Required for normal heart morphogenesis, skin development and ossification during bryogenesis.
<b>Form</b>	Tris-based buffer, 50% glycerol
<b>Molecular Mass</b>	63.3 kDa
<b>AA Sequence</b>	MGDAEGEDEVQFLRTDDEVVLQCSATVLKEQLKLCLAAEGFGNRLCFLEPTSNAQN VPPDLAICCFVLEQSLSVRALQEMLANTVEAGVLESSQGGGHRTLLYGHAILLRHAHS

 Tel: 1-631-559-9269    1-516-512-3133

 Email: [info@creative-biomart.com](mailto:info@creative-biomart.com)     Fax: 1-631-938-8127

 45-1 Ramsey Road, Shirley, NY 11967, USA

RMYLSCLTTSRSMTDKLAFDVGLQEDATGEACWWTMHPASKQRSEGEKVRVGDDI  
 ILVSVSSERYLHLSTASGELQVDASFMQTLWNMNPICSRCEEFGVTGGHVLRLFHG  
 HMDECLTISPADSDDQRRLVYYEGGAVCTHARSLWRLEPLRISWSGSHLRWGQPL  
 RVRHVTTGQYLALTEDQGLVVVDASKAHTKATSFCFRISKEKLDVAPKRDVEGMGP  
 PEIKYGESLCFVQHVASGLWLTYAAPDPKALRLGVLKKAHLHQEGHMDDALSLTR  
 CQQEESQAARMIHSTNGLYNQFIKSLDSFSGKPRGSGPPAGTALPIEGVILSLQDLIY  
 FEPPSEDLQHEEKQSKLRSLRNRQSLFQEEGMLSMVLNCIDRLNVYTAAHFAEFA  
 GEEAAESWKEIVNLLYELLASLIRGNRS

**Purity** > 90% as determined by SDS-PAGE.

**Notes** Repeated freezing and thawing is not recommended. Store working aliquots at 4 centigrade for up to one week.

**Storage** The shelf life is related to many factors, storage state, buffer ingredients, storage temperature and the stability of the protein itself. Generally, the shelf life of liquid form is 6 months at -20 centigrade/-80 centigrade. The shelf life of lyophilized form is 12 months at -20 centigrade/-80 centigrade.

**Concentration** A hardcopy of COA with concentration instruction is sent along with the products.

## GENE INFORMATION

**Gene Name** RYR1 ryanodine receptor 1 [ Homo sapiens (human) ]

**Official Symbol** RYR1

**Synonyms** CCO; MHS; RYR; MHS1; RYDR; SKRR; RYR-1; PPP1R137;

**Gene ID** 6261

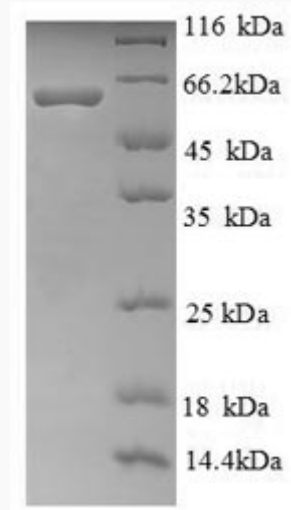
 Tel: 1-631-559-9269 1-516-512-3133

 Email: [info@creative-biomart.com](mailto:info@creative-biomart.com)  Fax: 1-631-938-8127

 45-1 Ramsey Road, Shirley, NY 11967, USA

UniProt ID

P21817



(Tris-Glycine gel) Discontinuous SDS-PAGE (reduced) with 5% enrichment gel and 15% separation gel.

☎ Tel: 1-631-559-9269 1-516-512-3133

☎ Email: [info@creative-biomart.com](mailto:info@creative-biomart.com) ☎ Fax: 1-631-938-8127

☎ 45-1 Ramsey Road, Shirley, NY 11967, USA