

Recombinant Human RYR1 protein (Skeletal), His-tagged

Cat. No. RYR1-790H Lot. No. (See product label)

SPECIFICATION

Product Overview	Recombinant Human RYR1 protein (Skeletal, His97-Cys392), fused to His-tag at the N-terminus, was expressed in E.coli.
Species	Human
Source	E.coli
ProteinLength	His97-Cys392
Description	This gene encodes a ryanodine receptor found in skeletal muscle. The encoded protein functions as a calcium release channel in the sarcoplasmic reticulum but also serves to connect the sarcoplasmic reticulum and transverse tubule. Mutations in this gene are associated with malignant hyperthermia susceptibility, central core disease, and minicore myopathy with external ophthalmoplegia. Alternatively spliced transcripts encoding different isoforms have been described.
Form	Freeze-dried powder. 20mM Tris, 150mM NaCl, pH8.0, containing 1mM EDTA, 1mM DTT, 0.01% SKL, 5% Trehalose and Proclin300.
Molecular Mass	Predicted Molecular Mass: 63.2 kDa; Accurate Molecular Mass: 63 kDa
Endotoxin	<1.0EU per 1g (determined by the LAL method)
Purity	> 95%

 Tel: 1-631-559-9269 1-516-512-3133

 Email: info@creative-biomart.com  Fax: 1-631-938-8127

 45-1 Ramsey Road, Shirley, NY 11967, USA

Applications	Positive Control; Immunogen; SDS-PAGE; WB.
Stability	The thermal stability is described by the loss rate. The loss rate was determined by accelerated thermal degradation test, that is, incubate the protein at 37 centigrade for 48h, and no obvious degradation and precipitation were observed. The loss rate is less than 5% within the expiration date under appropriate storage condition.
Storage	Avoid repeated freeze/thaw cycles. Store at 2-8 centigrade for one month. Aliquot and store at -80 centigrade for 12 months.
Reconstitution	Reconstitute in 20mM Tris, 150mM NaCl (pH8.0) to a concentration of 0.1-1.0 mg/mL. Do not vortex.

GENE INFORMATION

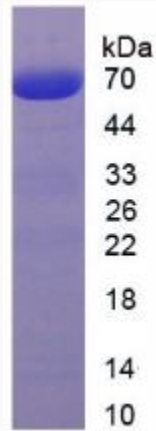
Gene Name	RYR1
Official Symbol	RYR1
Synonyms	CCO; MHS; RYR; MHS1; RYDR; SKRR; RYR-1; PPP1R137
Gene ID	6261
mRNA Refseq	NM_000540.3
Protein Refseq	NP_000531.2
MIM	180901
UniProt ID	P21817

 Tel: 1-631-559-9269 1-516-512-3133

 Email: info@creative-biomart.com  Fax: 1-631-938-8127

 45-1 Ramsey Road, Shirley, NY 11967, USA

SDS-PAGE of RYR1-790H



 Tel: 1-631-559-9269 1-516-512-3133

 Email: info@creative-biomart.com  Fax: 1-631-938-8127

 45-1 Ramsey Road, Shirley, NY 11967, USA