

Recombinant Human RYR2 protein, His-SUMO-tagged

Cat. No. RYR2-355H Lot. No. (See product label)

SPECIFICATION

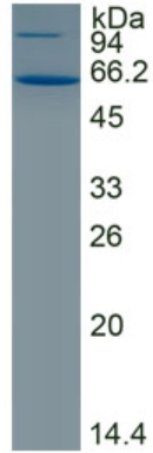
Product Overview	Recombinant Human RYR2 protein(Met1~Arg606), fused with N-terminal His and SUMO tag, was expressed in E. coli.
Species	Human
Source	E.coli
ProteinLength	Met1~Arg606
Form	Lyophilized from PBS, pH7.4, containing 0.01% SKL, 5% Trehalose.
Storage	Avoid repeated freeze/thaw cycles. Store at -20°C for 12 months. Aliquot and store at -80°C for 12 months.
Molecular Mass	93.8kDa
Endotoxin	<1.0EU per 1g (determined by the LAL method).
Purity	> 95%

 Tel: 1-631-559-9269 1-516-512-3133

 Email: info@creative-biomart.com  Fax: 1-631-938-8127

 45-1 Ramsey Road, Shirley, NY 11967, USA

SDS-PAGE



 Tel: 1-631-559-9269 1-516-512-3133

 Email: info@creative-biomart.com  Fax: 1-631-938-8127

 45-1 Ramsey Road, Shirley, NY 11967, USA