

Human Raji Whole Cell Lysate

Cat. No. Raji-009HCL **Lot. No.** (See product label)

SPECIFICATION

Product Overview

Ready-to-use whole cell lysates are derived from cell lines or tissues using highly refined extraction protocols to ensure exceptionally high quality, protein integrity and lot-to-lot reproducibility. All extracts are tested by SDS-PAGE using 4-20% gradient gels and immunoblot analysis using antibodies to key cell signaling components to confirm the presence of both high molecular weight and low molecular weight proteins.

Species Human

Form Liquid

Specificity

The cells were grown in medium supplemented with 10% fetal bovine serum. Cells were washed with PBS and then incubated on ice in modified RIPA buffer to lyse the cells. Protein integrity was ensured using a cocktail of protease inhibitors with broad specificity for the inhibition of aspartic, cysteine, and serine proteases as well as aminopeptidases (0.1 mM AEBSF HCl, 0.08 μM Aprotinin, 5 μM Bestatin, 1.5 μM E-64, 2 μM Leupeptin Hemisulfate, 1 μM Pepstatin A). Phosphatase inhibitors 1 mM NaF and 1 mM Na₃VO₄ were also added. Cell debris was removed by centrifugation. Protein concentration was determined by a modified Lowry assay using a commercially available kit. Protein concentration was adjusted to 2 mg/mL and then an equal volume of 2x SDS-PAGE sample buffer was added.

Applications WB, SDS-PAGE

 Tel: 1-631-559-9269 1-516-512-3133

 Email: info@creative-biomart.com  Fax: 1-631-938-8127

 45-1 Ramsey Road, Shirley, NY 11967, USA

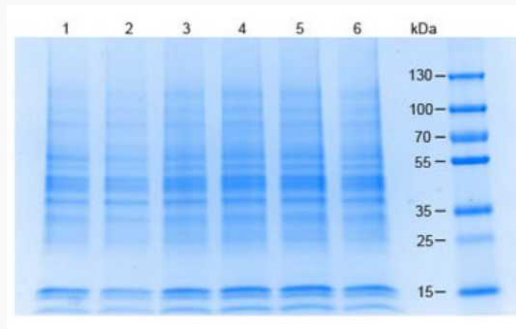
Cell Line	Raji - Human Lymphoblast
Lysate Fractionation	Whole Cell Lysate
Lysate Stimulation	Not Stimulated
Culture Type	Tissue Culture
Induction	None (Control)
Concentration	1.0 mg/mL by modified Lowry assay
Buffer	1× SDS-PAGE Sample Buffer (62.5 mM Tris HCl, 2% SDS, 10% Glycerol and 0.005% bromophenol blue, pH 6.8)
Preservative	None
Stabilizer	10% (v/v) Glycerol
Shipping	Dry Ice
Storage	Store vial at -70 centigrade or COLDER. For extended storage, aliquot contents to minimize freeze/thaw cycles.
Expiration	Expiration date is three months from date of receipt.

 Tel: 1-631-559-9269 1-516-512-3133

 Email: info@creative-biomart.com  Fax: 1-631-938-8127

 45-1 Ramsey Road, Shirley, NY 11967, USA

SDS-PAGE



SDS PAGE Results of Raji Whole Cell Lysate.

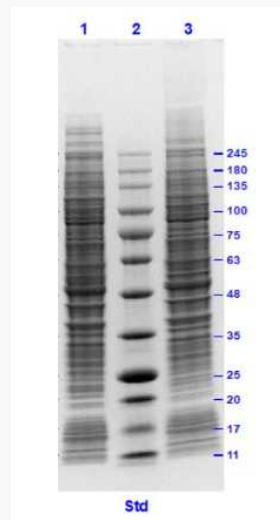
Lane 1: Raji Whole Cell Lysate Reduced [10 µg].

Lane 2: Opal Prestained Molecular Weight Marker.

Lane 3: Raji Whole Cell Lysate Non-Reduced [10 µg].

4-20% Gel, Coomassie Stained.

SDS-PAGE



Coomassie stained SDS-PAGE of 20 µg of (1) HeLa WCL, (2) Jurkat WCL, (3) HEK 293 WCL, (4) MCF-7 WCL, (5) A 549 WCL, (6) Raji WCL separated using a 4-20% gradient gel under reducing conditions. Molecular weight standards are shown.

Tel: 1-631-559-9269 1-516-512-3133

Email: info@creative-biomart.com Fax: 1-631-938-8127

45-1 Ramsey Road, Shirley, NY 11967, USA