

Human Ramos Whole Cell Lysate

Cat. No. Ramos-023HCL **Lot. No.** (See product label)

SPECIFICATION

Product Overview Multi-purpose Whole Cell Lysates are derived from cell lines using highly refined extraction protocols to ensure exceptionally high quality, protein integrity and lot-to-lot reproducibility. All extracts are tested by SDS-PAGE using 4-20% gradient gels.

Species Human

Form Liquid (sterile filtered)

Specificity Ramos cells were grown in RPMI-1640 medium supplemented with 10% fetal bovine serum. Cells were washed with PBS and then incubated on ice in modified RIPA buffer to lyse the cells. Protein integrity was ensured using a cocktail of protease inhibitors with broad specificity for the inhibition of aspartic, cysteine, and serine proteases as well as aminopeptidases (0.1 mM AEBSF HCl, 0.08 μM Aprotinin, 5 μM Bestatin, 1.5 μM E-64, 2 μM Leupeptin Hemisulfate, 1 μM Pepstatin A). Phosphatase inhibitors 1 mM NaF and 1 mM Na₃VO₄ were also added. Cell debris was removed by centrifugation. Protein concentration was determined by a modified Lowry assay using a commercially available kit. Protein concentration was adjusted to 4 mg/mL with 1× RIPA buffer.

Applications WB, SDS-PAGE

Cell Line Human - B Lymphocyte

Lysate Fractionation Whole Cell Lysate

 Tel: 1-631-559-9269 1-516-512-3133

 Email: info@creative-biomart.com  Fax: 1-631-938-8127

 45-1 Ramsey Road, Shirley, NY 11967, USA

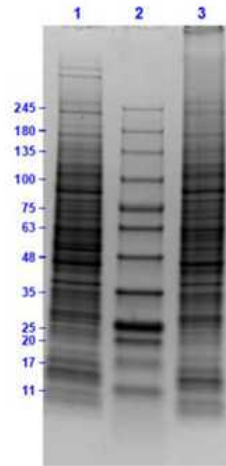
Lysate Stimulation	Not Stimulated
Culture Type	Tissue Culture
Induction	None (Control)
Concentration	4 mg/mL by BCA assay
Buffer	1x RIPA Buffer with HALT Protease and Phosphatase Inhibitors
Preservative	None
Stabilizer	None
Shipping	Dry Ice
Storage	Store vial at -70 centigrade or COLDER. For extended storage, aliquot lysate to minimize freeze/thaw cycles.
Expiration	Expiration date is three months from date of receipt.

 Tel: 1-631-559-9269 1-516-512-3133

 Email: info@creative-biomart.com  Fax: 1-631-938-8127

 45-1 Ramsey Road, Shirley, NY 11967, USA

SDS-PAGE



SDS-PAGE of Ramos Whole Cell Lysate.

Lane 1: Ramos Whole Cell Lysate Reduced (10 µg).

Lane 2: Opal Prestained Molecular Weight Marker.

Lane 3: Ramos Whole Cell Lysate Non-Reduced (10 µg).

Results show broad range of molecular weight bands with no sign of degradation