

Recombinant Mouse Reg2 Protein, His-tagged

Cat. No. Reg2-2763M **Lot. No.** (See product label)

SPECIFICATION

Product Overview	Recombinant Mouse Reg2 Protein (Gln23-Ala173) with N-His tag was expressed in E. coli.
Species	Mouse
Source	E.coli
ProteinLength	Gln23-Ala173
Description	Predicted to enable several functions, including identical protein binding activity; peptidoglycan binding activity; and protein phosphatase binding activity. Acts upstream of or within myelination and suckling behavior. Located in collagen-containing extracellular matrix. Is expressed in several structures, including gut; male reproductive gland or organ; and mesenteric adipose tissue. Human ortholog(s) of this gene implicated in type 1 diabetes mellitus. Orthologous to several human genes including REG1A (regenerating family member 1 alpha).
Form	Freeze-dried powder
Molecular Mass	Predicted Molecular Mass: 20.6 kDa Accurate Molecular Mass: 21 kDa
Purity	> 95%
Applications	Positive Control; Immunogen; SDS-PAGE; WB.

 Tel: 1-631-559-9269 1-516-512-3133

 Email: info@creative-biomart.com  Fax: 1-631-938-8127

 45-1 Ramsey Road, Shirley, NY 11967, USA

Stability	The thermal stability is described by the loss rate. The loss rate was determined by accelerated thermal degradation test, that is, incubate the protein at 37 centigrade for 48h, and no obvious degradation and precipitation were observed. The loss rate is less than 5% within the expiration date under appropriate storage condition.
Storage	Avoid repeated freeze/thaw cycles. Store at 2-8 centigrade for one month. Aliquot and store at -80 centigrade for 12 months.
Storage Buffer	20mM Tris, 150mM NaCl, pH8.0, containing 1mM EDTA, 1mM DTT, 0.01% SKL, 5% Trehalose and Proclin300.
Reconstitution	Reconstitute in 20mM Tris, 150mM NaCl (pH8.0) to a concentration of 0.1-1.0 mg/mL. Do not vortex.

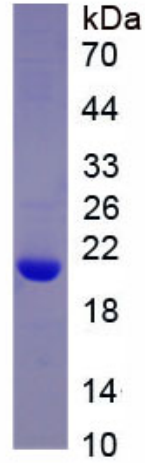
GENE INFORMATION

Gene Name	Reg2 regenerating islet-derived 2 [Mus musculus (house mouse)]
Official Symbol	Reg2
Synonyms	Reg2; regenerating islet-derived 2; PSP; PTP; REG-2; lithostathine-2; islet of Langerhans regenerating protein 2; pancreatic stone protein 2; pancreatic thread protein 2; regenerating islet-derived, mouse homolog 2
Gene ID	19693
mRNA Refseq	NM_009043
Protein Refseq	NP_033069
UniProt ID	Q08731

 Tel: 1-631-559-9269 1-516-512-3133

 Email: info@creative-biomart.com  Fax: 1-631-938-8127

 45-1 Ramsey Road, Shirley, NY 11967, USA



Tel: 1-631-559-9269 1-516-512-3133

Email: info@creative-biomart.com Fax: 1-631-938-8127

45-1 Ramsey Road, Shirley, NY 11967, USA