

## Recombinant Mouse Reg2 Protein (Gln23-Ala173), N-His tagged

Cat. No. Reg2-6788M Lot. No. (See product label)

### SPECIFICATION

<b>Product Overview</b>	Recombinant mouse Reg2 (Gln23-Ala173) fused with the N-terminal His tag was expressed in mammalian cells.
<b>Species</b>	Mouse
<b>Source</b>	Mammalian Cells
<b>ProteinLength</b>	Gln23-Ala173
<b>Description</b>	Predicted to enable several functions, including identical protein binding activity; peptidoglycan binding activity; and protein phosphatase binding activity. Acts upstream of or within myelination and suckling behavior. Located in collagen-containing extracellular matrix. Is expressed in several structures, including gut; male reproductive gland or organ; and mesenteric adipose tissue. Human ortholog (s) of this gene implicated in type 1 diabetes mellitus. Orthologous to several human genes including REG1A (regenerating family member 1 alpha).
<b>Form</b>	Lyophilized powder/frozen liquid
<b>Molecular Mass</b>	16.61 kDa
<b>Purity</b>	> 90 % as determined by SDS-PAGE
<b>Notes</b>	For research use only.

 Tel: 1-631-559-9269 1-516-512-3133

 Email: [info@creative-biomart.com](mailto:info@creative-biomart.com)  Fax: 1-631-938-8127

 45-1 Ramsey Road, Shirley, NY 11967, USA

<b>Storage</b>	Use a manual defrost freezer and avoid repeated freeze thaw cycles. Store at 2 to 8 centigrade for one week. Store at -20 to -80 centigrade for twelve months from the date of receipt.
<b>Storage Buffer</b>	Supplied as solution form in PBS or lyophilized from PBS.
<b>Reconstitution</b>	Reconstitute in sterile water for a stock solution.
<b>Shipping</b>	They are shipped out with dry ice/blue ice unless customers require otherwise.

## GENE INFORMATION

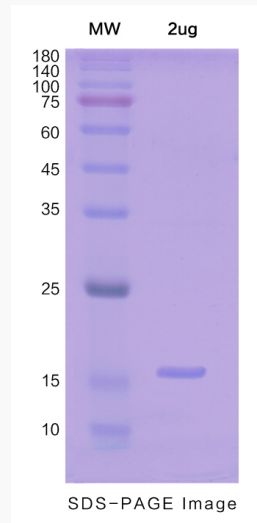
<b>Gene Name</b>	Reg2 regenerating islet-derived 2 [ <i>Mus musculus</i> (house mouse) ]
<b>Official Symbol</b>	Reg2
<b>Synonyms</b>	Reg2; regenerating islet-derived 2; PSP; PTP; REG-2; lithostathine-2; islet of Langerhans regenerating protein 2; pancreatic stone protein 2; pancreatic thread protein 2; regenerating islet-derived, mouse homolog 2
<b>Gene ID</b>	19693
<b>mRNA Refseq</b>	NM_009043
<b>Protein Refseq</b>	NP_033069
<b>UniProt ID</b>	Q08731

 Tel: 1-631-559-9269 1-516-512-3133

 Email: [info@creative-biomart.com](mailto:info@creative-biomart.com)  Fax: 1-631-938-8127

 45-1 Ramsey Road, Shirley, NY 11967, USA

**SDS-PAGE**



 Tel: 1-631-559-9269 1-516-512-3133

 Email: [info@creative-biomart.com](mailto:info@creative-biomart.com)  Fax: 1-631-938-8127

 45-1 Ramsey Road, Shirley, NY 11967, USA