

## Recombinant Rat Reg3a protein, His & T7-tagged

Cat. No. Reg3a-1281R Lot. No. (See product label)

### SPECIFICATION

<b>Product Overview</b>	Recombinant Rat Reg3a aa. (Gly25~Arg142 (Accession # P35231) fused with N-terminal His & T7 tag was produced in E. coli cells.
<b>Species</b>	Rat
<b>Source</b>	E.coli
<b>ProteinLength</b>	Gly25~Arg142
<b>Description</b>	Lectin-related secretory protein; overexpressed during the acute phase of pancreatitis.
<b>Form</b>	Freeze-dried powder
<b>Molecular Mass</b>	Predicted Molecular Mass: 16.8kDa.
<b>Endotoxin</b>	<1.0EU per 1g (determined by the LAL method)
<b>Purity</b>	>95%
<b>Characteristic</b>	The isoelectric point is 7.1.
<b>Applications</b>	SDS-PAGE; WB; ELISA; IP.
<b>Stability</b>	The thermal stability is described by the loss rate of the target protein. The loss rate

 Tel: 1-631-559-9269 1-516-512-3133

 Email: [info@creative-biomart.com](mailto:info@creative-biomart.com)  Fax: 1-631-938-8127

 45-1 Ramsey Road, Shirley, NY 11967, USA

was determined by accelerated thermal degradation test, that is, incubate the protein at 37°C for 48h, and no obvious degradation and precipitation were observed. (Referring from China Biological Products Standard, which was calculated by the Arrhenius equation.) The loss of this protein is less than 5% within the expiration date under appropriate storage condition.

<b>Storage</b>	Avoid repeated freeze/thaw cycles. Store at 2-8°C for one month. Aliquot and store at -80°C for 12 months.
<b>Storage buffer</b>	Supplied as lyophilized form in PBS, pH7.4, containing 5% trehalose, 0.01% sarcosyl.
<b>Reconstitution</b>	Reconstitute in sterile PBS, pH7.2-pH7.4.

## GENE INFORMATION

**Gene Name** [Reg3a regenerating islet-derived 3 alpha \[ Rattus norvegicus \(Norway rat\) \]](#)

**Official Symbol** [Reg3a](#)

**Synonyms** Reg3a; regenerating islet-derived 3 alpha; Pap2; PapII; regenerating islet-derived protein 3-alpha; REG 3; REG-3-alpha; islet of Langerhans regenerating protein 3; lithostathine 3; pancreatitis-associated protein 2; reg III-alpha; regIII; regenerating islet-derived protein III-alpha

**Gene ID** [171162](#)

**mRNA Refseq** [NM\\_001145846.2](#)

**Protein Refseq** [NP\\_001139318.1](#)

**UniProt ID** [P35231](#)

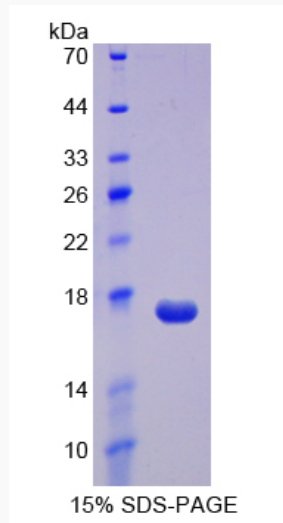
 Tel: 1-631-559-9269 1-516-512-3133

 Email: [info@creative-biomart.com](mailto:info@creative-biomart.com)  Fax: 1-631-938-8127

 45-1 Ramsey Road, Shirley, NY 11967, USA



**SDS-PAGE**



Tel: 1-631-559-9269 1-516-512-3133

Email: [info@creative-biomart.com](mailto:info@creative-biomart.com) Fax: 1-631-938-8127

45-1 Ramsey Road, Shirley, NY 11967, USA