

Active Recombinant Mouse Reg3b protein, His-tagged

Cat. No. Reg3b-1793M Lot. No. (See product label)

SPECIFICATION

Product Overview Active Recombinant Mouse Reg3b protein(P35230)(27-175 aa), fused with N-terminal His tag, was expressed in E.coli.

Species Mouse

Source E.coli

ProteinLength 27-175 aa

Form 20mM Tris, 150mM NaCl, pH8.0, containing 1mM EDTA, 1mM DTT, 0.01% SKL, 5% Trehalose and Proclin300.

Bio-activity Regenerating Islet Derived Protein 3 Beta (REG3b) also known as PAP-I and HIP is bactericidal C-type lectin which acts against several intestinal Gram-positive bacteria and Gram-negative bacteria. The Reg family proteins have been implicated in a range of physiological processes including acting as acute phase reactants, lectins, survival/growth factors for insulin-producing pancreatic beta-cells, neural cells, and epithelial cells of the digestive system. To test the effect of REG3b on cell proliferation of SK-N-SH, SK-N-SH cells were seeded into triplicate wells of 96-well plates at a density of 5,000 cells/well and allowed to attach overnight, then the medium was replaced with serum-free standard DMEM prior to the addition of various concentrations of REG3b. After incubated for 72h, cells were observed by inverted microscope and cell proliferation was measured by Cell Counting Kit-8 (CCK-8). Briefly, 10 μ of CCK-8 solution was added to each well of the plate, then measure the

 Tel: 1-631-559-9269 1-516-512-3133

 Email: info@creative-biomart.com  Fax: 1-631-938-8127

 45-1 Ramsey Road, Shirley, NY 11967, USA

absorbance at 450nm using a microplate reader after incubating the plate for 1-4 hours at 37°C .Cell proliferation of SK-N-SH cells after incubation with REG3b for 72h observed by inverted microscope was shown. The dose-effect curve of REG3b was shown. It was obvious that REG3b significantly promoted cell proliferation of SK-N-SH cells. The ED50 for this effect is typically 3.685 - 84.37 ng/mL.

Molecular Mass 20.4kDa

Purity > 97%

Storage Avoid repeated freeze/thaw cycles. Store at 2-8°C for one month. Store at -20°C for 12 months. Aliquot and store at -80°C for 12 months.

Reconstitution Reconstitute in 20mM Tris, 150mM NaCl (pH8.0) to a concentration of 0.1-1.0 mg/mL. Do not vortex.

GENE INFORMATION

Gene Name [Reg3b regenerating islet-derived 3 beta \[Mus musculus \(house mouse\) \]](#)

Official Symbol [Reg3b](#)

Synonyms Reg3b; HIP; Pap; PAP1; REG-III; regenerating islet-derived 3 beta; regenerating islet-derived protein 3-beta; REG-3-beta; reg III-beta; RegIII (beta); pancreatitis-associated protein 1; regenerating islet-derived protein III-beta

Gene ID [18489](#)

mRNA Refseq [NM_011036](#)

Protein Refseq [NP_035166](#)

 Tel: 1-631-559-9269 1-516-512-3133

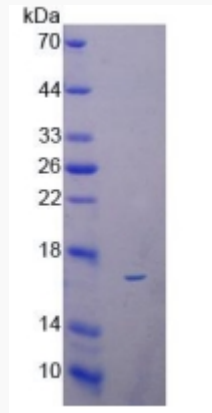
 Email: info@creative-biomart.com  Fax: 1-631-938-8127

 45-1 Ramsey Road, Shirley, NY 11967, USA

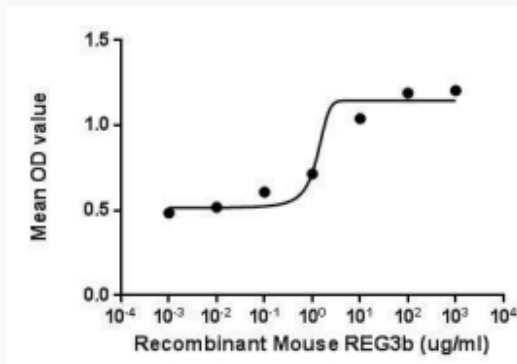
UniProt ID

P35230

SDS-PAGE



Activity



 Tel: 1-631-559-9269 1-516-512-3133

 Email: info@creative-biomart.com  Fax: 1-631-938-8127

 45-1 Ramsey Road, Shirley, NY 11967, USA