

Recombinant Rat Reg3b protein, His & T7-tagged

Cat. No. Reg3b-1794R Lot. No. (See product label)

SPECIFICATION

Product Overview	Recombinant Rat Reg3b aa. (Glu27~Gly175 (Accession # P25031)) fused with N-terminal His & T7 tag was produced in E. coli cells.
Species	Rat
Source	E.coli
ProteinLength	Glu27~Gly175
Description	Lectin-related secretory protein; may be involved in stress response to control bacterial proliferation during acute pancreatitis.
Form	Freeze-dried powder
Molecular Mass	Predicted Molecular Mass: 20.4kDa
Endotoxin	<1.0EU per 1ug (determined by the LAL method)
Purity	>95%
Applications	SDS-PAGE; WB; ELISA; IP.
Stability	The thermal stability is described by the loss rate. The loss rate was determined by accelerated thermal degradation test, that is, incubate the protein at 37°C for 48h, and no obvious degradation and precipitation were observed. The loss rate is less

 Tel: 1-631-559-9269 1-516-512-3133

 Email: info@creative-biomart.com  Fax: 1-631-938-8127

 45-1 Ramsey Road, Shirley, NY 11967, USA

than 5% within the expiration date under appropriate storage condition.

Storage

Avoid repeated freeze/thaw cycles. Store at 2-8°C for one month. Aliquot and store at -80°C for 12 months.

Storage buffer

Supplied as lyophilized form in PBS, pH7.4, containing 5% trehalose, 0.01% sarcosyl.

Reconstitution

Reconstitute in sterile PBS, pH7.2-pH7.4.

Isoelectric Point

7

GENE INFORMATION

Gene Name

[Reg3b regenerating family member 3 beta \[Rattus norvegicus \(Norway rat\) \]](#)

Official Symbol

[Reg3b](#)

Synonyms

Reg3b; regenerating family member 3 beta; Pap; Pap1; regenerating islet-derived protein 3-beta; Pancreatitis-associated protein 1; REG-2; REG-3-beta; peptide 23; reg III-beta; regenerating islet-derived 3 beta; regenerating islet-derived protein III-beta

Gene ID

[24618](#)

mRNA Refseq

[NM_053289.1](#)

Protein Refseq

[NP_445741.1](#)

UniProt ID

[P25031](#)

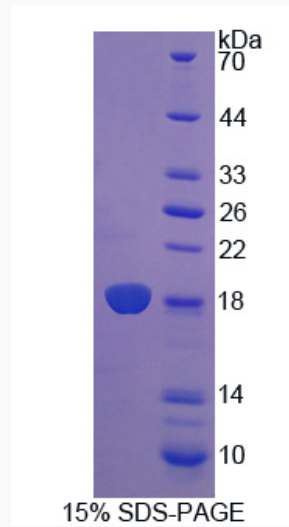
 Tel: 1-631-559-9269 1-516-512-3133

 Email: info@creative-biomart.com  Fax: 1-631-938-8127

 45-1 Ramsey Road, Shirley, NY 11967, USA



SDS-PAGE



Tel: 1-631-559-9269 1-516-512-3133

Email: info@creative-biomart.com Fax: 1-631-938-8127

45-1 Ramsey Road, Shirley, NY 11967, USA