

Recombinant Rat Reg3g protein, His-tagged

Cat. No. Reg3g-1284R Lot. No. (See product label)

SPECIFICATION

Product Overview	Recombinant Rat Reg3g aa. (Val33~Thr147 (Accession # P42854) fused with N-terminal His tag was produced in E. coli cells.
Species	Rat
Source	E.coli
ProteinLength	Val33~Thr147
Form	Freeze-dried powder
Molecular Mass	Predicted Molecular Mass: 13.9kDa.
Endotoxin	<1.0EU per 1g (determined by the LAL method)
Purity	>95%
Characteristic	The isoelectric point is 6.7.
Applications	SDS-PAGE; WB; ELISA; IP.
Stability	The thermal stability is described by the loss rate of the target protein. The loss rate was determined by accelerated thermal degradation test, that is, incubate the protein at 37°C for 48h, and no obvious degradation and precipitation were observed. (Referring from China Biological Products Standard, which was calculated by the

 Tel: 1-631-559-9269 1-516-512-3133

 Email: info@creative-biomart.com  Fax: 1-631-938-8127

 45-1 Ramsey Road, Shirley, NY 11967, USA

Arrhenius equation.) The loss of this protein is less than 5% within the expiration date under appropriate storage condition.

Storage

Avoid repeated freeze/thaw cycles. Store at 2-8°C for one month. Aliquot and store at -80°C for 12 months.

Storage buffer

Supplied as lyophilized form in PBS, pH7.4, containing 5% sucrose, 0.01% sarcosyl.

Reconstitution

Reconstitute in sterile PBS, pH7.2-pH7.4.

GENE INFORMATION

Gene Name

Reg3g regenerating family member 3 gamma [*Rattus norvegicus* (Norway rat)]

Official Symbol

Reg3g

Synonyms

Reg3g; regenerating family member 3 gamma; Pap3; PAPIII; regenerating islet-derived protein 3-gamma; REG-3-gamma; pancreatitis-associated protein 3; reg III-gamma; regenerating islet-derived 3 gamma; regenerating islet-derived protein III-gamma

Gene ID

24620

mRNA Refseq

NM_173097.1

Protein Refseq

NP_775120.1

UniProt ID

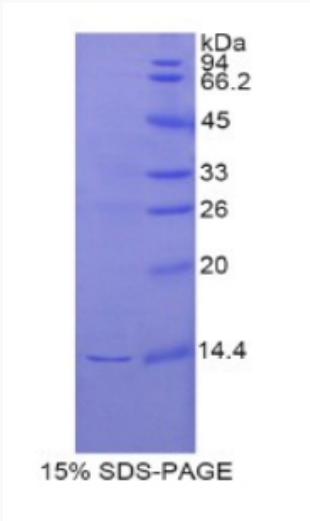
P42854

 Tel: 1-631-559-9269 1-516-512-3133

 Email: info@creative-biomart.com  Fax: 1-631-938-8127

 45-1 Ramsey Road, Shirley, NY 11967, USA

SDS-PAGE



 Tel: 1-631-559-9269 1-516-512-3133

 Email: info@creative-biomart.com  Fax: 1-631-938-8127

 45-1 Ramsey Road, Shirley, NY 11967, USA